

Datasheet for ABIN2725105
MAB21L1 Protein (His tag)



[Go to Product page](#)

1 Image

Overview

Quantity:	50 µg
Target:	MAB21L1
Origin:	Human
Source:	Escherichia coli (E. coli)
Protein Type:	Recombinant
Purification tag / Conjugate:	This MAB21L1 protein is labelled with His tag.
Application:	Antibody Production (AbP), Standard (STD)

Product Details

- Characteristics:
- Recombinant human Mab-21-like 1 (C. elegans) (MAB21L1), full length, with N-terminal HIS tag, expressed in E.Coli, 50 µg (full length, N-term HIS tag) protein expressed in E. coli.
 - Produced with end-sequenced ORF clone

Purity: > 80 % as determined by SDS-PAGE and Coomassie blue staining

Target Details

Target:	MAB21L1
Alternative Name:	Mab-21-Like 1 (C. Elegans) (Mab21l1) (MAB21L1 Products)
Background:	This gene is similar to the MAB-21 cell fate-determining gene found in C. elegans. It may be involved in eye and cerebellum development, and it has been proposed that expansion of a trinucleotide repeat region in the 5' UTR may play a role in a variety of psychiatric disorders.

Target Details

Molecular Weight: 40.8 kDa

NCBI Accession: [NP_005575](#)

Application Details

Application Notes: Recombinant human proteins can be used for:
Native antigens for optimized antibody production
Positive controls in ELISA and other antibody assays

Comment: The tag is located at the N-terminal.

Restrictions: For Research Use only

Handling

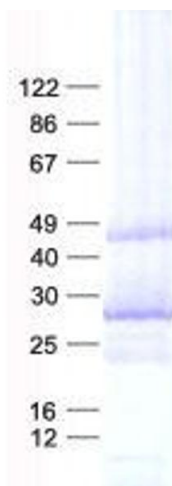
Concentration: 50 µg/mL

Buffer: 50 mM Tris, 8M Urea, pH 8.0.

Storage: -80 °C

Storage Comment: Store at -80°C. Thaw on ice, aliquot to individual single-use tubes, and then re-freeze immediately. Only 2-3 freeze thaw cycles are recommended.

Images



Western Blotting

Image 1. Validation with Western Blot