

Datasheet for ABIN2725110

## MACC1 Protein (Myc-DYKDDDDK Tag)



[Go to Product page](#)

### 1 Image

#### Overview

|                               |   |
|-------------------------------|---|
| Quantity:                     | 20 µg   |
| Target:                       | MACC1   |
| Origin:                       | Human   |
| Source:                       | HEK-293 Cells   |
| Protein Type:                 | Recombinant   |
| Purification tag / Conjugate: | This MACC1 protein is labelled with Myc-DYKDDDDK Tag. |
| Application:                  | Antibody Production (AbP), Standard (STD)             |

#### Product Details

- Characteristics:
- Recombinant human MACC1 protein expressed in HEK293 cells.
  - Produced with end-sequenced ORF clone

Purity: > 80 % as determined by SDS-PAGE and Coomassie blue staining

#### Target Details

Target: MACC1

Alternative Name: Macc1 ([MACC1 Products](#))

Background: MACC1 is a key regulator of the hepatocyte growth factor (HGF MIM 142409)-HGF receptor (HGFR, or MET MIM 164860) pathway, which is involved in cellular growth, epithelial-mesenchymal transition, angiogenesis, cell motility, invasiveness, and metastasis. Expression of MACC1 in colon cancer (MIM 114500) specimens is an independent prognostic indicator for metastasis formation and metastasis-free survival (Stein et al., 2009 [PubMed])

## Target Details

19098908)].[supplied by OMIM, Mar 2009].

Molecular Weight: 96.5 kDa

NCBI Accession: [NP\\_877439](#)

## Application Details

Application Notes: Recombinant human proteins can be used for:  
Native antigens for optimized antibody production  
Positive controls in ELISA and other antibody assays

Comment: The tag is located at the C-terminal.

Restrictions: For Research Use only

## Handling

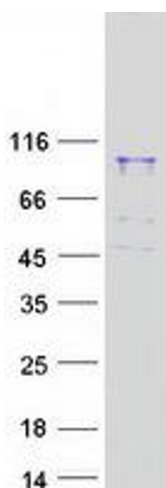
Concentration: 50 µg/mL

Buffer: 25 mM Tris.HCl, pH 7.3, 100 mM glycine, 10 % glycerol.

Storage: -80 °C

Storage Comment: Store at -80°C. Thaw on ice, aliquot to individual single-use tubes, and then re-freeze immediately. Only 2-3 freeze thaw cycles are recommended.

## Images



### Western Blotting

**Image 1.** Validation with Western Blot