

Datasheet for ABIN2725392

**anti-MAP2K4 antibody****3** Images[Go to Product page](#)

## Overview

Quantity:	0.1 mL
Target:	MAP2K4
Reactivity:	Human
Host:	Mouse
Clonality:	Monoclonal
Application:	Western Blotting (WB), Immunohistochemistry (IHC), Immunofluorescence (IF), Immunoprecipitation (IP)

## Product Details

Immunogen:	Full-length protein expressed in 293T cell transfected with human MAP2K4 expression vector
Clone:	2D5
Isotype:	IgG1
Purification:	Purified from mouse ascites fluids by affinity chromatography

## Target Details

Target:	MAP2K4
Alternative Name:	MAP2K4 ( <a href="#">MAP2K4 Products</a> )
Molecular Weight:	44.3 kDa
Gene ID:	6416
NCBI Accession:	<a href="#">NM_003010</a>

## Target Details

HGNC:	6416
Pathways:	<a href="#">MAPK Signaling</a> , <a href="#">TLR Signaling</a> , <a href="#">Fc-epsilon Receptor Signaling Pathway</a> , <a href="#">Activation of Innate immune Response</a> , <a href="#">Toll-Like Receptors Cascades</a> , <a href="#">BCR Signaling</a>

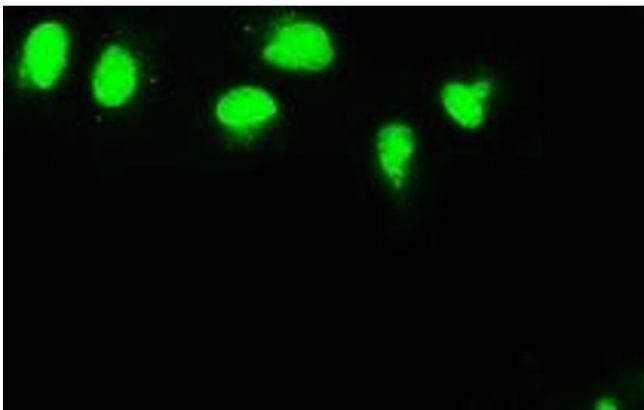
## Application Details

Application Notes:	WB 1:2000, IHC 1:150, IF 1:100, IP 2 µg/500 µL
Comment:	The concentration of the product may vary between diferrent lots.
Restrictions:	For Research Use only

## Handling

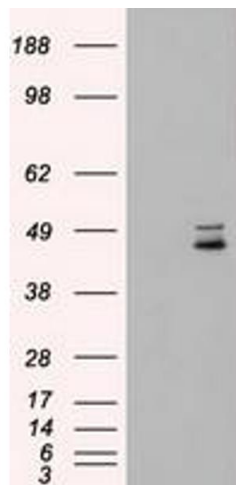
Format:	Liquid
Concentration:	0.5-1.0 mg/mL
Buffer:	PBS ( pH 7.3) containing 1 % BSA, 50 % glycerol and 0.02 % sodium azide.
Preservative:	Sodium azide
Precaution of Use:	This product contains sodium azide: a POISONOUS AND HAZARDOUS SUBSTANCE which should be handled by trained staff only.

## Images



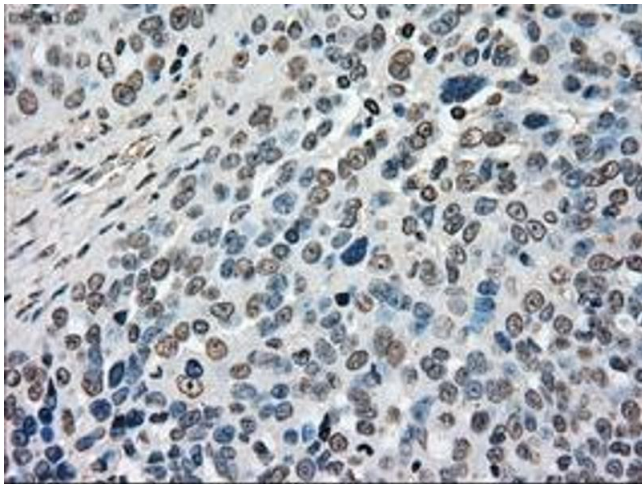
### Immunofluorescence

**Image 1.** Anti-MAP2K4 mouse monoclonal antibody (ABIN2452439) immunofluorescent staining of COS7 cells transiently transfected by pCMV6-ENTRY MAP2K4 (RC206051).



#### Western Blotting

**Image 2.** HEK293T cells were transfected with the pCMV6-ENTRY control (Left lane) or pCMV6-ENTRY MAP2K4 (Right lane) cDNA for 48 hrs and lysed. Equivalent amounts of cell lysates (5 µg per lane) were separated by SDS-PAGE and immunoblotted with anti-MAP2K4.



#### Immunohistochemistry

**Image 3.** Immunohistochemical staining of paraffin-embedded Adenocarcinoma of ovary tissue using anti-MAP2K4 mouse monoclonal antibody. (ABIN2452439, Dilution 1:50)