

Datasheet for ABIN2725419  
**anti-MAPK6 antibody (AA 345-721)**



[Go to Product page](#)

2 Images

## Overview

Quantity:	0.1 mL
Target:	MAPK6
Binding Specificity:	AA 345-721
Reactivity:	Human
Host:	Mouse
Clonality:	Monoclonal
Conjugate:	This MAPK6 antibody is un-conjugated
Application:	Western Blotting (WB), Immunohistochemistry (IHC)

## Product Details

Immunogen:	Recombinant protein expressed in E.coli corresponding to amino acids 345-721 of human ERK3
Clone:	1A9
Isotype:	IgG2a
Purification:	Purified from mouse ascites fluids by affinity chromatography

## Target Details

Target:	MAPK6
Alternative Name:	MAPK6 ( <a href="#">MAPK6 Products</a> )
Molecular Weight:	82.5 kDa

## Target Details

Gene ID:	5597
NCBI Accession:	<a href="#">NM_002748</a>
HGNC:	5597
Pathways:	<a href="#">MAPK Signaling</a> , <a href="#">Neurotrophin Signaling Pathway</a> , <a href="#">Regulation of Muscle Cell Differentiation</a> , <a href="#">Hepatitis C</a>

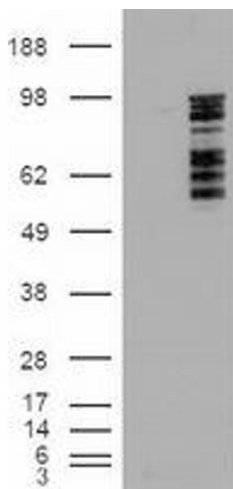
## Application Details

Application Notes:	WB: 1:1000, IHC 1,50
Comment:	The concentration of the product may vary between diferrent lots.
Restrictions:	For Research Use only

## Handling

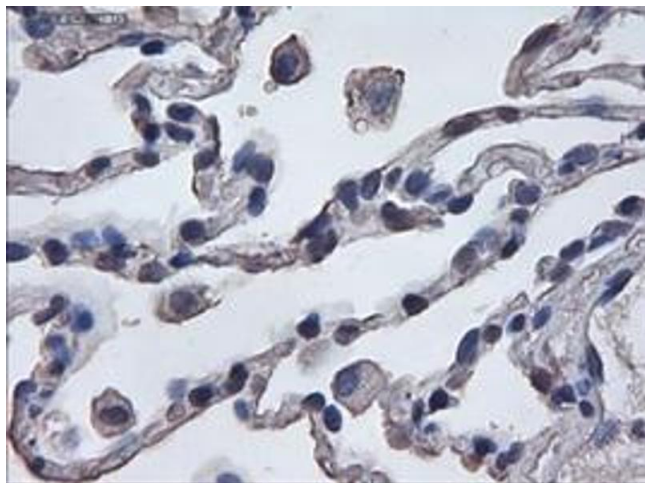
Format:	Liquid
Concentration:	0.5-1.0 mg/mL
Buffer:	PBS ( pH 7.3) containing 1 % BSA, 50 % glycerol and 0.02 % sodium azide.
Preservative:	Sodium azide
Precaution of Use:	This product contains sodium azide: a POISONOUS AND HAZARDOUS SUBSTANCE which should be handled by trained staff only.

## Images



**Western Blotting**

**Image 1.** HEK293T cells were transfected with the pCMV6-ENTRY control (Left lane) or pCMV6-ENTRY MAPK6 (RC201597) (Right lane) cDNA for 48 hrs and lysed. Equivalent amounts of cell lysates (5 µg per lane) were separated by SDS-PAGE and immunoblotted with anti-MAPK6.



#### Immunohistochemistry

**Image 2.** Immunohistochemical staining of paraffin-embedded lung using anti-ERK3 (TA000076) mouse monoclonal antibody.