

Datasheet for ABIN2725799
anti-Melanoma gp100 antibody

3 Images

[Go to Product page](#)

Overview

Quantity:	0.1 mL
Target:	Melanoma gp100 (PMEL)
Reactivity:	Human, Dog
Host:	Mouse
Clonality:	Monoclonal
Conjugate:	This Melanoma gp100 antibody is un-conjugated
Application:	Immunohistochemistry (IHC), Western Blotting (WB)

Product Details

Immunogen:	Full-length protein expressed in 293T cell transfected with human SILV expression vector
Clone:	9G3
Isotype:	IgG1
Purification:	Purified from mouse ascites fluids by affinity chromatography

Target Details

Target:	Melanoma gp100 (PMEL)
Alternative Name:	SILV (PMEL Products)
Molecular Weight:	70.3 kDa
Gene ID:	6490
NCBI Accession:	NM_006928

Target Details

HGNC: 6490

Application Details

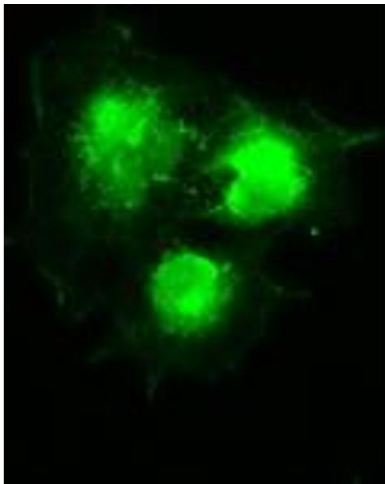
Application Notes:	WB 1:2000, IHC: 1:150
Comment:	The concentration of the product may vary between diferrent lots.
Restrictions:	For Research Use only

Handling

Format:	Liquid
Concentration:	0.5-1.0 mg/mL
Buffer:	PBS (pH 7.3) containing 1 % BSA, 50 % glycerol and 0.02 % sodium azide.
Preservative:	Sodium azide
Precaution of Use:	This product contains sodium azide: a POISONOUS AND HAZARDOUS SUBSTANCE which should be handled by trained staff only.

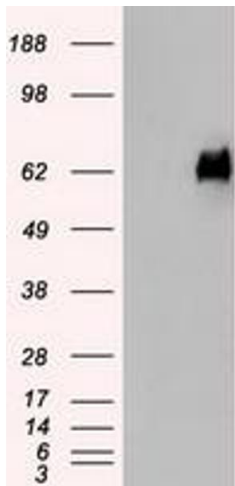
Images





Immunofluorescence

Image 2. Anti-SILV mouse monoclonal antibody (ABIN2452277) immunofluorescent staining of COS7 cells transiently transfected by pCMV6-ENTRY SILV (RC200663).



Western Blotting

Image 3. HEK293T cells were transfected with the pCMV6-ENTRY control (Left lane) or pCMV6-ENTRY SILV (Right lane) cDNA for 48 hrs and lysed. Equivalent amounts of cell lysates (5 µg per lane) were separated by SDS-PAGE and immunoblotted with anti-SILV.