

Datasheet for ABIN2725819  
**MPP7 Protein (Myc-DYKDDDDK Tag)**[Go to Product page](#)

## 1 Image

## Overview

Quantity:	20 µg
Target:	MPP7
Origin:	Human
Source:	HEK-293 Cells
Protein Type:	Recombinant
Purification tag / Conjugate:	This MPP7 protein is labelled with Myc-DYKDDDDK Tag.
Application:	Antibody Production (AbP), Standard (STD)

## Product Details

Characteristics:	<ul style="list-style-type: none"><li>• Recombinant human Membrane protein, palmitoylated 7 (MAGUK p55 subfamily member 7) (MPP7) protein expressed in HEK293 cells.</li><li>• Produced with end-sequenced ORF clone</li></ul>
Purity:	> 80 % as determined by SDS-PAGE and Coomassie blue staining

## Target Details

Target:	MPP7
Abstract:	<a href="#">MPP7 Products</a>
Background:	The protein encoded by this gene is a member of the p55 Stardust family of membrane-associated guanylate kinase (MAGUK) proteins, which function in the establishment of epithelial cell polarity. This family member forms a complex with the polarity protein DLG1 (discs, large homolog 1) and facilitates epithelial cell polarity and tight junction formation.

## Target Details

Polymorphisms in this gene are associated with variations in site-specific bone mineral density (BMD). Alternative splicing results in multiple transcript variants.

Molecular Weight: 65.3 kDa

NCBI Accession: [NP\\_775767](#)

Pathways: [Cell-Cell Junction Organization](#)

## Application Details

Application Notes: Recombinant human proteins can be used for:  
Native antigens for optimized antibody production  
Positive controls in ELISA and other antibody assays

Comment: The tag is located at the C-terminal.

Restrictions: For Research Use only

## Handling

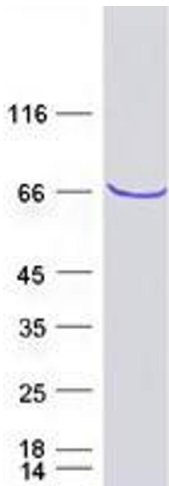
Concentration: 50 µg/mL

Buffer: 25 mM Tris.HCl, pH 7.3, 100 mM glycine, 10 % glycerol.

Storage: -80 °C

Storage Comment: Store at -80°C. Thaw on ice, aliquot to individual single-use tubes, and then re-freeze immediately. Only 2-3 freeze thaw cycles are recommended.

## Images



### Western Blotting

**Image 1.** Validation with Western Blot