

Datasheet for ABIN2725820

## MARCH8 Protein (Transcript Variant 6) (Myc-DYKDDDDK Tag)



[Go to Product page](#)

### 1 Image

#### Overview

Quantity:	20 µg
Target:	MARCH8
Protein Characteristics:	Transcript Variant 6
Origin:	Human
Source:	HEK-293 Cells
Protein Type:	Recombinant
Purification tag / Conjugate:	This MARCH8 protein is labelled with Myc-DYKDDDDK Tag.
Application:	Antibody Production (AbP), Standard (STD)

#### Product Details

Characteristics:	<ul style="list-style-type: none"><li>• Recombinant human Membrane-associated ring finger (C3HC4) 8 (MARCH8), transcript variant 6 (transcript variant 6) protein expressed in HEK293 cells.</li><li>• Produced with end-sequenced ORF clone</li></ul>
Purity:	> 80 % as determined by SDS-PAGE and Coomassie blue staining

#### Target Details

Target:	MARCH8
Alternative Name:	Membrane-Associated Ring Finger (c3hc4) 8 (March8) ( <a href="#">MARCH8 Products</a> )
Background:	MARCH8 is a member of the MARCH family of membrane-bound E3 ubiquitin ligases (EC 6.3.2.19). MARCH enzymes add ubiquitin (see MIM 191339) to target lysines in substrate proteins, thereby signaling their vesicular transport between membrane compartments.

## Target Details

MARCH8 induces the internalization of several membrane glycoproteins (Goto et al., 2003 [PubMed 12582153] Bartee et al., 2004 [PubMed 14722266]).[supplied by OMIM, Apr 2010]

Molecular Weight: 32.8 kDa

NCBI Accession: [NP\\_001002265](#)

## Application Details

Application Notes: Recombinant human proteins can be used for:  
Native antigens for optimized antibody production  
Positive controls in ELISA and other antibody assays

Comment: The tag is located at the C-terminal.

Restrictions: For Research Use only

## Handling

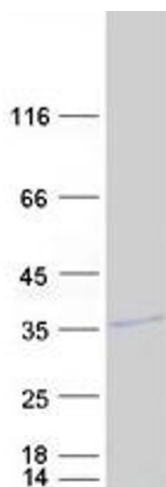
Concentration: 50 µg/mL

Buffer: 25 mM Tris.HCl, pH 7.3, 100 mM glycine, 10 % glycerol.

Storage: -80 °C

Storage Comment: Store at -80°C. Thaw on ice, aliquot to individual single-use tubes, and then re-freeze immediately. Only 2-3 freeze thaw cycles are recommended.

## Images



### Western Blotting

**Image 1.** Validation with Western Blot