



[Go to Product page](#)

Datasheet for ABIN2725964

MIA Protein (Transcript Variant 1)

1 Image

Overview

Quantity:	20 µg
Target:	MIA
Protein Characteristics:	Transcript Variant 1
Origin:	Human
Source:	Escherichia coli (E. coli)
Protein Type:	Recombinant
Biological Activity:	Active
Application:	Functional Studies (Func), Antibody Production (AbP), Standard (STD), Protein Interaction (PI)

Product Details

Specificity:	Optimal preservation of protein structure, post-translational modifications and functions.
Characteristics:	<ul style="list-style-type: none">• Recombinant human MIA (transcript variant 1) protein expressed in E. coli.• Produced with end-sequenced ORF clone• Tested for bioactivity.
Purity:	> 95 % as determined by SDS-PAGE and Coomassie blue staining
Endotoxin Level:	Endotoxin level is <0.1 ng/µg of protein (<1EU/µg).
Biological Activity Comment:	ED50 was determined by the dose-dependant proliferation of the human A375 melanoma cell line. The expected ED50 for this effect is 4-6ug/mL.

Target Details

Target:	MIA
---------	-----

Target Details

Alternative Name:	Mia (MIA Products)
Background:	Elicits growth inhibition on melanoma cells in vitro as well as some other neuroectodermal tumors, including gliomas. [UniProtKB/Swiss-Prot Function]
Molecular Weight:	12.2 kDa
NCBI Accession:	NP_006524

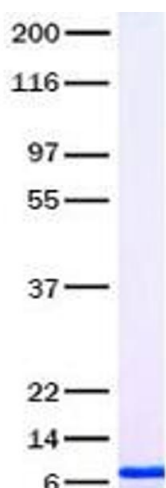
Application Details

Application Notes:	Recombinant human proteins can be used for: Native antigens for optimized antibody production Positive controls in ELISA and other antibody assays Protein-protein interaction In vitro biochemical assays and cell-based functional assays
Restrictions:	For Research Use only

Handling

Buffer:	Lyophilized from a 0.2 μ M filtered solution of 20 mM phosphate buffer, 100 mM NaCl, pH 7.2
Handling Advice:	Resuspend the protein in the desired concentration in proper buffer
Storage:	-80 °C
Storage Comment:	Store at -80°C. Thaw on ice, aliquot to individual single-use tubes, and then re-freeze immediately. Only 2-3 freeze thaw cycles are recommended.

Images



Western Blotting

Image 1. Validation with Western Blot