

Datasheet for ABIN2726136

**MMP1 Protein (Transcript Variant 1)****1** Image[Go to Product page](#)

## Overview

Quantity:	10 µg
Target:	MMP1
Protein Characteristics:	Transcript Variant 1
Origin:	Human
Source:	Escherichia coli (E. coli)
Protein Type:	Recombinant
Biological Activity:	Active
Application:	Antibody Production (AbP), Standard (STD), Functional Studies (Func), Protein Interaction (PI)

## Product Details

Specificity:	Optimal preservation of protein structure, post-translational modifications and functions.
Characteristics:	<ul style="list-style-type: none"><li>• Recombinant human MMP-1 (transcript variant 1) protein expressed in E. coli.</li><li>• Produced with end-sequenced ORF clone</li><li>• Tested for bioactivity.</li></ul>
Purity:	> 90 % as determined by SDS-PAGE and Coomassie blue staining
Endotoxin Level:	Endotoxin level is <0.1 ng/µg of protein (<1EU/µg).
Biological Activity Comment:	MMP-1 activity was measured by its ability to cleave a chromogenic peptide MMP-1 substrate at room temperature. At an MMP-1 concentration of 2.5 ug/mL, 50% cleavage was achieved at an incubation time of approximately 25 minutes

## Target Details

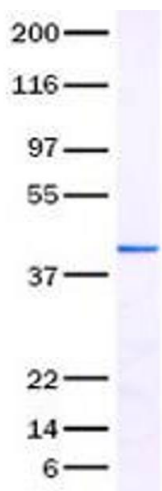
Target:	MMP1
Alternative Name:	Mmp-1 ( <a href="#">MMP1 Products</a> )
Background:	<p>This gene encodes a member of the peptidase M10 family of matrix metalloproteinases (MMPs). Proteins in this family are involved in the breakdown of extracellular matrix in normal physiological processes, such as embryonic development, reproduction, and tissue remodeling, as well as in disease processes, such as arthritis and metastasis. The encoded preproprotein is proteolytically processed to generate the mature protease. This secreted protease breaks down the interstitial collagens, including types I, II, and III. The gene is part of a cluster of MMP genes on chromosome 11. Mutations in this gene are associated with chronic obstructive pulmonary disease (COPD). Alternative splicing results in multiple transcript variants, at least one of which encodes an isoform that is proteolytically processed.</p>
Molecular Weight:	42.7 kDa
NCBI Accession:	<a href="#">NP_002412</a>

## Application Details

Application Notes:	<p>Recombinant human proteins can be used for:</p> <p>Native antigens for optimized antibody production</p> <p>Positive controls in ELISA and other antibody assays</p> <p>Protein-protein interaction</p> <p>In vitro biochemical assays and cell-based functional assays</p>
Restrictions:	For Research Use only

## Handling

Buffer:	Lyophilized from a 0.2 µM filtered solution of 20 mM phosphate buffer, 100 mM NaCl, pH 7.2
Handling Advice:	Resuspend the protein in the desired concentration in proper buffer
Storage:	-80 °C
Storage Comment:	Store at -80°C. Thaw on ice, aliquot to individual single-use tubes, and then re-freeze immediately. Only 2-3 freeze thaw cycles are recommended.



Western Blotting

Image 1. Validation with Western Blot