

Datasheet for ABIN2726137

## MMP1 Protein (Transcript Variant 1) (His tag)



[Go to Product page](#)

### 1 Image

#### Overview

Quantity:	10 µg
Target:	MMP1
Protein Characteristics:	Transcript Variant 1
Origin:	Human
Source:	HEK-293 Cells
Protein Type:	Recombinant
Biological Activity:	Active
Purification tag / Conjugate:	This MMP1 protein is labelled with His tag.
Application:	Antibody Production (AbP), Standard (STD), Functional Studies (Func), Protein Interaction (PI)

#### Product Details

Specificity:	Optimal preservation of protein structure, post-translational modifications and functions.
Characteristics:	<ul style="list-style-type: none"> <li>• Recombinant human MMP-1 (transcript variant 1) protein expressed in HEK293.</li> <li>• Produced with end-sequenced ORF clone</li> <li>• Tested for bioactivity.</li> </ul>
Purity:	> 90 % , as determined by Coomassie stained SDS-PAGE.
Endotoxin Level:	Less than 1.0 EU per µg of protein as determine by the LAL method.
Biological Activity Comment:	Human MMP-1 cleaves the peptide substrate Mca-KPLGL-Dpa-AR-NH2 with an activity above 200 pmol/min/µg.

## Target Details

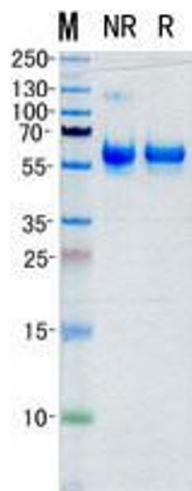
Target:	MMP1
Alternative Name:	Mmp-1 ( <a href="#">MMP1 Products</a> )
Background:	<p>This gene encodes a member of the peptidase M10 family of matrix metalloproteinases (MMPs). Proteins in this family are involved in the breakdown of extracellular matrix in normal physiological processes, such as embryonic development, reproduction, and tissue remodeling, as well as in disease processes, such as arthritis and metastasis. The encoded preproprotein is proteolytically processed to generate the mature protease. This secreted protease breaks down the interstitial collagens, including types I, II, and III. The gene is part of a cluster of MMP genes on chromosome 11. Mutations in this gene are associated with chronic obstructive pulmonary disease (COPD). Alternative splicing results in multiple transcript variants, at least one of which encodes an isoform that is proteolytically processed.</p>
Molecular Weight:	54 kDa
NCBI Accession:	<a href="#">NP_002412</a>

## Application Details

Application Notes:	<p>Recombinant human proteins can be used for:</p> <ul style="list-style-type: none"><li>Native antigens for optimized antibody production</li><li>Positive controls in ELISA and other antibody assays</li><li>Protein-protein interaction</li><li>In vitro biochemical assays and cell-based functional assays</li></ul>
Comment:	The tag is located at the N-terminal.
Restrictions:	For Research Use only

## Handling

Concentration:	> 50 µg/mL
Buffer:	25 mM TRIS, 10 mM CaCl <sub>2</sub> , 150 mM NaCl, pH 7.5
Storage:	-80 °C
Storage Comment:	Store at -80°C. Thaw on ice, aliquot to individual single-use tubes, and then re-freeze immediately. Only 2-3 freeze thaw cycles are recommended.



Western Blotting

**Image 1.** Validation with Western Blot