

Datasheet for ABIN2726215

MOBKL3 Protein (Transcript Variant 3) (His tag)[Go to Product page](#)**1** Image

Overview

Quantity:	10 µg
Target:	MOBKL3
Protein Characteristics:	Transcript Variant 3
Origin:	Human
Source:	Escherichia coli (E. coli)
Protein Type:	Recombinant
Purification tag / Conjugate:	This MOBKL3 protein is labelled with His tag.
Application:	Antibody Production (AbP), Standard (STD)

Product Details

Characteristics:	<ul style="list-style-type: none">• Recombinant human MOBKL3 (transcript variant 3) protein expressed in E. coli.• Produced with end-sequenced ORF clone
Purity:	> 95 % as determined by SDS-PAGE and Coomassie blue staining
Endotoxin Level:	< 0.1 EU per µg protein as determined by LAL test

Target Details

Target:	MOBKL3
Alternative Name:	Mobkl3 (MOBKL3 Products)
Background:	This gene was identified based on its similarity with the mouse counterpart. Studies of the mouse counterpart suggest that the expression of this gene may be regulated during oocyte

Target Details

maturation and preimplantation following zygotic gene activation. Alternatively spliced transcript variants encoding distinct isoforms have been observed. Naturally occurring read-through transcription occurs between this locus and the neighboring locus HSPE1.[provided by RefSeq, Feb 2011].

Molecular Weight: 28.2 kDa

NCBI Accession: [NP_001094289](#)

Application Details

Application Notes: Recombinant human proteins can be used for:
Native antigens for optimized antibody production
Positive controls in ELISA and other antibody assays

Comment: The tag is located at the C-terminal.

Restrictions: For Research Use only

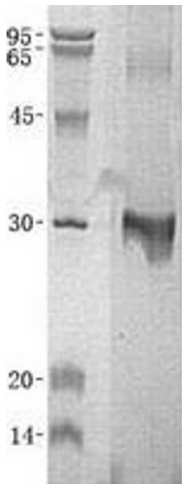
Handling

Buffer: Lyophilized from a 0.2 µM filtered solution of 20 mM Tris-HCl, 150 mM NaCl, 1 mM DTT, pH 8.0.
Stable for at least 6 months from date of receipt under proper storage and handling conditions.

Storage: -80 °C

Storage Comment: Store at -80°C. Thaw on ice, aliquot to individual single-use tubes, and then re-freeze immediately. Only 2-3 freeze thaw cycles are recommended.

Images



Western Blotting

Image 1. Validation with Western Blot