

Datasheet for ABIN2726298

**MPP5 Protein (Myc-DYKDDDDK Tag)**[Go to Product page](#)**1** Image

## Overview

Quantity:	20 µg
Target:	MPP5
Origin:	Human
Source:	HEK-293 Cells
Protein Type:	Recombinant
Purification tag / Conjugate:	This MPP5 protein is labelled with Myc-DYKDDDDK Tag.
Application:	Antibody Production (AbP), Standard (STD)

## Product Details

Characteristics:	<ul style="list-style-type: none"><li>• Recombinant human MPP5 protein expressed in HEK293 cells.</li><li>• Produced with end-sequenced ORF clone</li></ul>
Purity:	> 80 % as determined by SDS-PAGE and Coomassie blue staining

## Target Details

Target:	MPP5
Alternative Name:	Mpp5 ( <a href="#">MPP5 Products</a> )
Background:	This gene encodes a member of the p55-like subfamily of the membrane-associated guanylate kinase (MAGUK) gene superfamily. The encoded protein participates in the polarization of differentiating cells, has been shown to regulate myelinating Schwann cells (PMID: 20237282), and is one of the components of the Crumbs complex in the retina. Mice which express lower levels of the orthologous protein have retinal degeneration and impaired vision (PMID:

## Target Details

	22114289). Multiple transcript variants encoding different isoforms have been found for this gene.
Molecular Weight:	77.1 kDa
NCBI Accession:	<a href="#">NP_071919</a>
Pathways:	<a href="#">Nucleotide Phosphorylation</a> , <a href="#">Tube Formation</a> , <a href="#">Asymmetric Protein Localization</a>

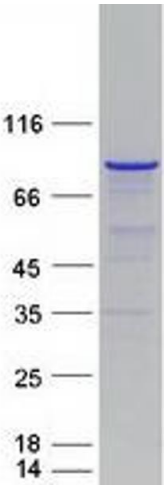
## Application Details

Application Notes:	Recombinant human proteins can be used for: Native antigens for optimized antibody production Positive controls in ELISA and other antibody assays
Comment:	The tag is located at the C-terminal.
Restrictions:	For Research Use only

## Handling

Concentration:	50 µg/mL
Buffer:	25 mM Tris.HCl, pH 7.3, 100 mM glycine, 10 % glycerol.
Storage:	-80 °C
Storage Comment:	Store at -80°C. Thaw on ice, aliquot to individual single-use tubes, and then re-freeze immediately. Only 2-3 freeze thaw cycles are recommended.

## Images



**Western Blotting**

**Image 1.** Validation with Western Blot