

Datasheet for ABIN2726567

anti-MTRF1L antibody

3 Images



[Go to Product page](#)

Overview

Quantity:	0.1 mL
Target:	MTRF1L
Reactivity:	Human
Host:	Mouse
Clonality:	Monoclonal
Conjugate:	This MTRF1L antibody is un-conjugated
Application:	Western Blotting (WB), Immunofluorescence (IF), Immunohistochemistry (IHC), Flow Cytometry (FACS)

Product Details

Immunogen:	Full length human recombinant protein of human MTRF1L (NP_061914) produced in HEK293T cell.
Clone:	2B5
Isotype:	IgG2b
Purification:	Purified from mouse ascites fluids by affinity chromatography

Target Details

Target:	MTRF1L
Alternative Name:	MTRF1L (MTRF1L Products)
Molecular Weight:	43.6 kDa

Target Details

Gene ID: 54516

NCBI Accession: [NM_019041](#)

HGNC: 54516

Application Details

Application Notes: WB 1:2000, IHC 1:50, IF 1:100, FLOW 1:100

Comment: The concentration of the product may vary between different lots.

Restrictions: For Research Use only

Handling

Format: Liquid

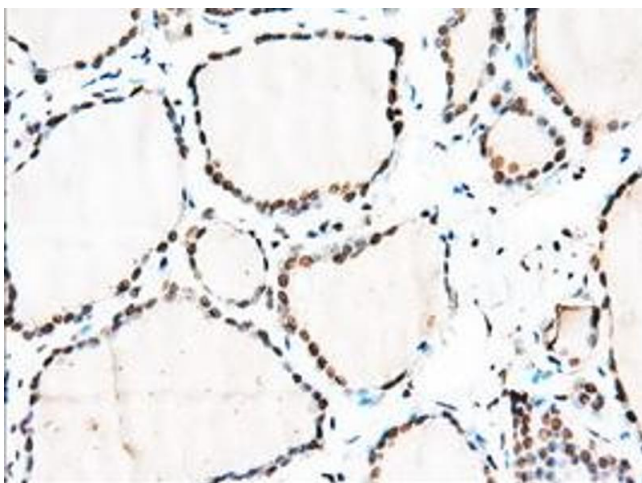
Concentration: 0.5-1.0 mg/mL

Buffer: PBS (pH 7.3) containing 1 % BSA, 50 % glycerol and 0.02 % sodium azide.

Preservative: Sodium azide

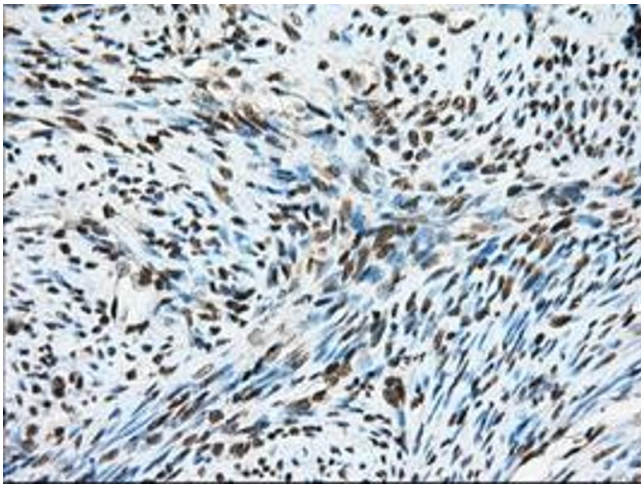
Precaution of Use: This product contains sodium azide: a POISONOUS AND HAZARDOUS SUBSTANCE which should be handled by trained staff only.

Images



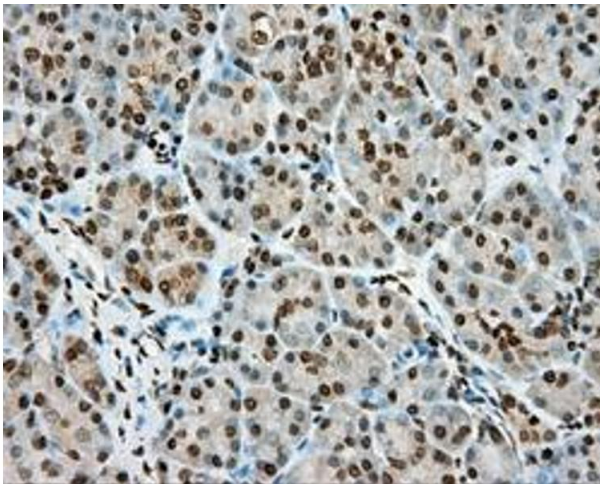
Immunohistochemistry

Image 1. Immunohistochemical staining of paraffin-embedded Adenocarcinoma of Human colon tissue using anti-MTRF1L mouse monoclonal antibody. (ABIN2453339, Dilution 1:50)



Immunohistochemistry

Image 2. Immunohistochemical staining of paraffin-embedded Human liver tissue using anti-MTRF1L mouse monoclonal antibody. (ABIN2453339, Dilution 1:50)



Immunohistochemistry

Image 3. Immunohistochemical staining of paraffin-embedded Human colon tissue using anti-MTRF1L mouse monoclonal antibody. (ABIN2453339, Dilution 1:50)