

Datasheet for ABIN2726587

MUS81 Protein (Myc-DYKDDDDK Tag)[Go to Product page](#)**1** Image

Overview

Quantity:	20 µg
Target:	MUS81
Origin:	Human
Source:	HEK-293 Cells
Protein Type:	Recombinant
Purification tag / Conjugate:	This MUS81 protein is labelled with Myc-DYKDDDDK Tag.
Application:	Antibody Production (AbP), Standard (STD)

Product Details

Characteristics:	<ul style="list-style-type: none">• Recombinant human MUS81 protein expressed in HEK293 cells.• Produced with end-sequenced ORF clone
Purity:	> 80 % as determined by SDS-PAGE and Coomassie blue staining

Target Details

Target:	MUS81
Alternative Name:	Mus81 (MUS81 Products)
Background:	This gene encodes a structure-specific endonuclease which belongs to the XPF/MUS81 endonuclease family and plays a critical role in the resolution of recombination intermediates during DNA repair after interstrand cross-links, replication fork collapse, and DNA double-strand breaks. The encoded protein associates with one of two closely related essential meiotic endonuclease proteins (EME1 or EME2) to form a complex that processes DNA secondary

Target Details

structures. It contains an N-terminal DEAH helicase domain, an excision repair cross complementation group 4 (ERCC4) endonuclease domain, and two tandem C-terminal helix-hairpin-helix domains. Mice with a homozygous knockout of the orthologous gene have significant meiotic defects including the failure to repair a subset of DNA double strand breaks.

Molecular Weight: 61 kDa

NCBI Accession: [NP_079404](#)

Pathways: [DNA Damage Repair](#)

Application Details

Application Notes: Recombinant human proteins can be used for:
Native antigens for optimized antibody production
Positive controls in ELISA and other antibody assays

Comment: The tag is located at the C-terminal.

Restrictions: For Research Use only

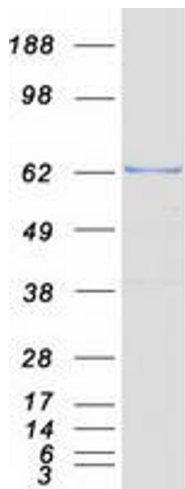
Handling

Concentration: 50 µg/mL

Buffer: 25 mM Tris.HCl, pH 7.3, 100 mM glycine, 10 % glycerol.

Storage: -80 °C

Storage Comment: Store at -80°C. Thaw on ice, aliquot to individual single-use tubes, and then re-freeze immediately. Only 2-3 freeze thaw cycles are recommended.



Western Blotting

Image 1. Validation with Western Blot