

Datasheet for ABIN2726750
NAALAD2 Protein (Myc-DYKDDDDK Tag)



[Go to Product page](#)

1 Image

Overview

Quantity:	20 µg
Target:	NAALAD2
Origin:	Human
Source:	HEK-293 Cells
Protein Type:	Recombinant
Purification tag / Conjugate:	This NAALAD2 protein is labelled with Myc-DYKDDDDK Tag.
Application:	Antibody Production (AbP), Standard (STD)

Product Details

- Characteristics:
- Recombinant human NAALAD2 protein expressed in HEK293 cells.
 - Produced with end-sequenced ORF clone

Purity: > 80 % as determined by SDS-PAGE and Coomassie blue staining

Target Details

Target:	NAALAD2
Alternative Name:	Naalad2 (NAALAD2 Products)
Background:	This gene is a member of the N-acetylated alpha-linked acidic dipeptidase (NAALADase) gene family. The representative member of this family is the gene encoding human prostate-specific membrane antigen (PSM), which is a marker of prostatic carcinomas and is the first to be shown to possess NAALADase activity. NAALADase cleaves N-acetyl-L-aspartate-L-glutamate (NAAG), which is a neuropeptide expressed both in the central nervous systems and in the

Target Details

periphery and is thought to function as a neurotransmitter. The product of this gene is a type II integral membrane protein. Transient transfection of this gene confers both NAALADase and dipetidyl peptidase IV activities to mammalian cells. This gene is highly expressed in ovary and testis as well as within discrete brain areas. Two transcript variants encoding different isoforms have been found for this gene.

Molecular Weight: 83.4 kDa

NCBI Accession: [NP_005458](#)

Application Details

Application Notes: Recombinant human proteins can be used for:
Native antigens for optimized antibody production
Positive controls in ELISA and other antibody assays

Comment: The tag is located at the C-terminal.

Restrictions: For Research Use only

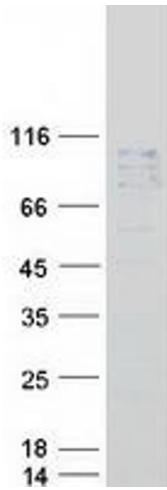
Handling

Concentration: 50 µg/mL

Buffer: 25 mM Tris.HCl, pH 7.3, 100 mM glycine, 10 % glycerol.

Storage: -80 °C

Storage Comment: Store at -80°C. Thaw on ice, aliquot to individual single-use tubes, and then re-freeze immediately. Only 2-3 freeze thaw cycles are recommended.



Western Blotting

Image 1. Validation with Western Blot