

Datasheet for ABIN2726818  
**anti-NAPEPLD antibody**[Go to Product page](#)

## 2 Images

## Overview

|              |   |
|--------------|---|
| Quantity:    | 0.1 mL  |
| Target:      | NAPEPLD   |
| Reactivity:  | Human   |
| Host:        | Mouse   |
| Clonality:   | Monoclonal  |
| Application: | Western Blotting (WB), Immunohistochemistry (IHC) |

## Product Details

|                  |  |
|------------------|--|
| Immunogen:       | Full length human recombinant protein of human NAPEPLD(NP_075060) produced in HEK293T cell.  |
| Clone:           | 3D5  |
| Isotype:         | IgG2b  |
| Characteristics: | Homo sapiens N-acyl phosphatidylethanolamine phospholipase D (NAPEPLD), transcript variant 2 |
| Purification:    | Purified from mouse ascites fluids by affinity chromatography                                |

## Target Details

|                   |   |
|-------------------|---|
| Target:           | NAPEPLD   |
| Alternative Name: | NAPEPLD ( <a href="#">NAPEPLD Products</a> )  |
| Background:       | NAPEPLD is a phospholipase D type enzyme that catalyzes the release of N-acylethanolamine (NAE) from N-acyl-phosphatidylethanolamine (NAPE) in the second step of the biosynthesis of |

## Target Details

|                   |  |
|-------------------|--|
|                   | N-acylethanolamine (Okamoto et al., 2004 [PubMed 14634025]). |
| Molecular Weight: | 45.4 kDa   |
| Gene ID:          | 222236   |
| NCBI Accession:   | <a href="#">NM_198990</a>                                    |
| HGNC:             | 222236   |

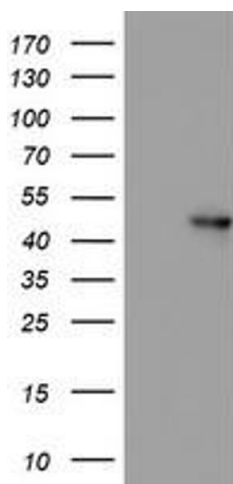
## Application Details

|                    |   |
|--------------------|---|
| Application Notes: | WB 1:2000, IHC 1:150,   |
| Comment:           | The concentration of the product may vary between diferrent lots. |
| Restrictions:      | For Research Use only   |

## Handling

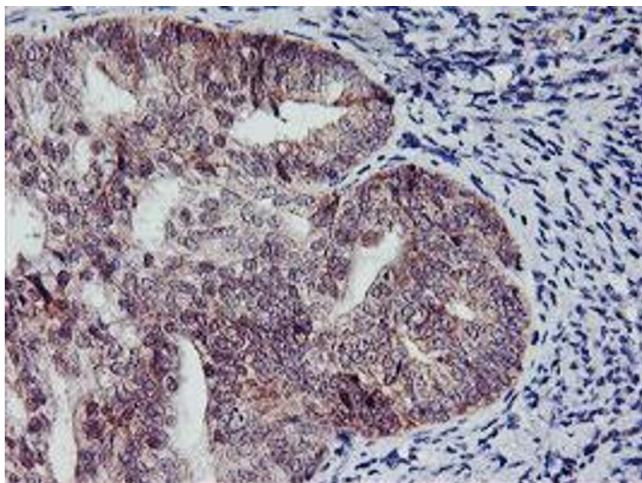
|                    |  |
|--------------------|--|
| Format:            | Liquid   |
| Concentration:     | 0.5-1.0 mg/mL  |
| Buffer:            | PBS (PH 7.3) containing 1 % BSA, 50 % glycerol and 0.02 % sodium azide.  |
| Preservative:      | Sodium azide   |
| Precaution of Use: | This product contains sodium azide: a POISONOUS AND HAZARDOUS SUBSTANCE which should be handled by trained staff only. |
| Storage:           | -20 °C   |

## Images



### Western Blotting

**Image 1.** HEK293T cells were transfected with the pCMV6-ENTRY control (Left lane) or pCMV6-ENTRY NAPEPLD (Right lane) cDNA for 48 hrs and lysed. Equivalent amounts of cell lysates (5 µg per lane) were separated by SDS-PAGE and immunoblotted with anti-NAPEPLD.



#### Immunohistochemistry

**Image 2.** Immunohistochemical staining of paraffin-embedded Adenocarcinoma of Human endometrium tissue using anti-NAPEPLD mouse monoclonal antibody. (ABIN2455285)