

Datasheet for ABIN2726852

**NAT8B Protein (Myc-DYKDDDDK Tag)**[Go to Product page](#)**1** Image

## Overview

Quantity:	20 µg
Target:	NAT8B
Origin:	Human
Source:	HEK-293 Cells
Protein Type:	Recombinant
Purification tag / Conjugate:	This NAT8B protein is labelled with Myc-DYKDDDDK Tag.
Application:	Antibody Production (AbP), Standard (STD)

## Product Details

Characteristics:	<ul style="list-style-type: none"><li>• Recombinant human NAT8B protein expressed in HEK293 cells.</li><li>• Produced with end-sequenced ORF clone</li></ul>
Purity:	> 80 % as determined by SDS-PAGE and Coomassie blue staining

## Target Details

Target:	NAT8B
Alternative Name:	Nat8b ( <a href="#">NAT8B Products</a> )
Background:	The protein encoded by this gene is highly similar to the N-acetyltransferase 8 (NAT8) gene product, which is a kidney and liver protein with homology to bacterial acetyltransferases involved in drug resistance. This gene is localized on chromosome 2 in the vicinity of the NAT8 gene and may represent a pseudogene of NAT8. This gene contains two polymorphic nonsense mutations that disrupt the active site of the protein. The full-length product of this gene

## Target Details

	contains a complete acetyltransferase domain and is identical in length to NAT8.
Molecular Weight:	25.3 kDa
NCBI Accession:	<a href="#">NP_057431</a>

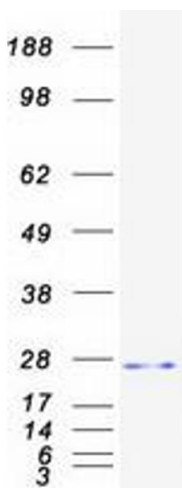
## Application Details

Application Notes:	Recombinant human proteins can be used for: Native antigens for optimized antibody production Positive controls in ELISA and other antibody assays
Comment:	The tag is located at the C-terminal.
Restrictions:	For Research Use only

## Handling

Concentration:	50 µg/mL
Buffer:	25 mM Tris.HCl, pH 7.3, 100 mM glycine, 10 % glycerol.
Storage:	-80 °C
Storage Comment:	Store at -80°C. Thaw on ice, aliquot to individual single-use tubes, and then re-freeze immediately. Only 2-3 freeze thaw cycles are recommended.

## Images



### Western Blotting

**Image 1.** Validation with Western Blot