

Datasheet for ABIN2727203

Neurotrophin 3 Protein (NTF3) (Transcript Variant 2)[Go to Product page](#)**1** Image

Overview

Quantity:	10 µg
Target:	Neurotrophin 3 (NTF3)
Protein Characteristics:	Transcript Variant 2
Origin:	Human
Source:	Escherichia coli (E. coli)
Protein Type:	Recombinant
Biological Activity:	Active
Application:	Functional Studies (Func), Antibody Production (AbP), Standard (STD), Protein Interaction (PI)

Product Details

Specificity:	Optimal preservation of protein structure, post-translational modifications and functions.
Characteristics:	<ul style="list-style-type: none">• Recombinant human Neurotrophin 3 / NTF3 (transcript variant 2) protein expressed in E. coli.• Produced with end-sequenced ORF clone• Tested for bioactivity.
Purity:	> 95 % as determined by SDS-PAGE and Coomassie blue staining
Endotoxin Level:	Endotoxin level is <0.1 ng/µg of protein (<1EU/µg).
Biological Activity Comment:	The ED50 as determined by the dose-dependent induction of choline acetyl transferase activity in rat basal forebrain primary septal cell cultures was found to be in the range of 20-50 ng/ml.

Target Details

Target:	Neurotrophin 3 (NTF3)
---------	-----------------------

Target Details

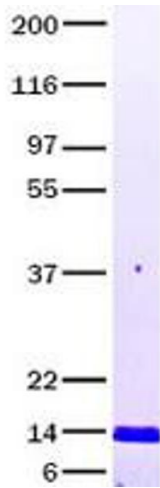
Alternative Name:	Neurotrophin 3,ntf3 (NTF3 Products)
Background:	Seems to promote the survival of visceral and proprioceptive sensory neurons. [UniProtKB/Swiss-Prot Function]
Molecular Weight:	13.6 kDa
NCBI Accession:	NP_002518
Pathways:	RTK Signaling , Neurotrophin Signaling Pathway

Application Details

Application Notes:	Recombinant human proteins can be used for: Native antigens for optimized antibody production Positive controls in ELISA and other antibody assays Protein-protein interaction In vitro biochemical assays and cell-based functional assays
Restrictions:	For Research Use only

Handling

Buffer:	Lyophilized from a 0.2 μ M filtered solution of 20 mM phosphate buffer, 100 mM NaCl, pH 7.2
Handling Advice:	Resuspend the protein in the desired concentration in proper buffer
Storage:	-80 °C
Storage Comment:	Store at -80°C. Thaw on ice, aliquot to individual single-use tubes, and then re-freeze immediately. Only 2-3 freeze thaw cycles are recommended.



Western Blotting

Image 1. Validation with Western Blot