

Datasheet for ABIN2727245

**Nerve Growth Factor Protein (NGF) (Transcript Variant A)**[Go to Product page](#)**1** Image

## Overview

Quantity:	20 µg
Target:	Nerve Growth Factor (NGF)
Protein Characteristics:	Transcript Variant A
Origin:	Mouse
Source:	Escherichia coli (E. coli)
Protein Type:	Recombinant
Biological Activity:	Active
Application:	Antibody Production (AbP), Standard (STD), Functional Studies (Func), Protein Interaction (PI)

## Product Details

Specificity:	Optimal preservation of protein structure, post-translational modifications and functions.
Characteristics:	<ul style="list-style-type: none"><li>• Recombinant human NGF (transcript variant A) protein expressed in E. coli.</li><li>• Produced with end-sequenced ORF clone</li><li>• Tested for bioactivity.</li></ul>
Purity:	> 95 % as determined by SDS-PAGE and Coomassie blue staining
Endotoxin Level:	Endotoxin level is <0.1 ng/µg of protein (<1EU/µg).
Biological Activity Comment:	ED50 as determined by the dose-dependent stimulation of the proliferation of human TF-1 cells is less than or equal to 1.0 ng/ml, corresponding to a specific activity of > 1 x 10 <sup>6</sup> units/mg.

## Target Details

Target:	Nerve Growth Factor (NGF)
---------	---------------------------

## Target Details

Alternative Name: [Ngf \(NGF Products\)](#)

Molecular Weight: 13.4 kDa

NCBI Accession: [NP\\_038637](#)

Pathways: [Regulation of Cell Size](#)

## Application Details

Application Notes: Recombinant human proteins can be used for:  
Native antigens for optimized antibody production  
Positive controls in ELISA and other antibody assays  
Protein-protein interaction  
In vitro biochemical assays and cell-based functional assays

Restrictions: For Research Use only

## Handling

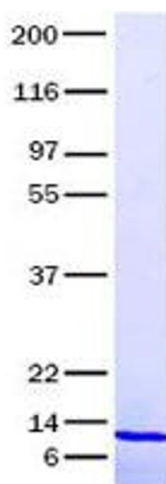
Buffer: Lyophilized from a 0.2  $\mu$ M filtered solution of 20 mM phosphate buffer, 100 mM NaCl, pH 7.2

Handling Advice: Resuspend the protein in the desired concentration in proper buffer

Storage: -80 °C

Storage Comment: Store at -80°C. Thaw on ice, aliquot to individual single-use tubes, and then re-freeze immediately. Only 2-3 freeze thaw cycles are recommended.

## Images



### Western Blotting

**Image 1.** Validation with Western Blot