

Datasheet for ABIN2727386

## NALP8 Protein (Myc-DYKDDDDK Tag)



[Go to Product page](#)

### 1 Image

#### Overview

Quantity:	20 µg
Target:	NALP8 (NLRP8)
Origin:	Human
Source:	HEK-293 Cells
Protein Type:	Recombinant
Purification tag / Conjugate:	This NALP8 protein is labelled with Myc-DYKDDDDK Tag.
Application:	Antibody Production (AbP), Standard (STD)

#### Product Details

Characteristics:	<ul style="list-style-type: none"> <li>• Recombinant human NLRP8 / NALP8 protein expressed in HEK293 cells.</li> <li>• Produced with end-sequenced ORF clone</li> </ul>
Purity:	> 80 % as determined by SDS-PAGE and Coomassie blue staining

#### Target Details

Target:	NALP8 (NLRP8)
Abstract:	<a href="#">NLRP8 Products</a>
Background:	This gene encodes a member of the nucleotide-binding oligomerization domain/ leucine rich repeat/ pyrin domain containing (NLRP) subfamily, which belongs to the Nod-like receptor family of proteins. NLRP genes play roles in the mammalian innate immune system through inflammasome formation and activation of caspases. In addition, NLRP genes have been found to function during mammalian reproduction. Consistent with a function during human

## Target Details

	preimplantation development, this gene is expressed at high levels in oocytes with decreased levels in embryos. Alternative splicing results in multiple transcript variants.
Molecular Weight:	119.2 kDa
NCBI Accession:	<a href="#">NP_789781</a>
Pathways:	<a href="#">Inflammasome</a>

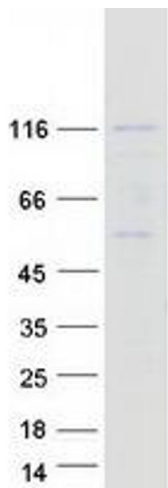
## Application Details

Application Notes:	Recombinant human proteins can be used for: Native antigens for optimized antibody production Positive controls in ELISA and other antibody assays
Comment:	The tag is located at the C-terminal.
Restrictions:	For Research Use only

## Handling

Concentration:	50 µg/mL
Buffer:	25 mM Tris.HCl, pH 7.3, 100 mM glycine, 10 % glycerol.
Storage:	-80 °C
Storage Comment:	Store at -80°C. Thaw on ice, aliquot to individual single-use tubes, and then re-freeze immediately. Only 2-3 freeze thaw cycles are recommended.

## Images



**Western Blotting**

**Image 1.** Validation with Western Blot