

Datasheet for ABIN2727394

NMDAR3A + 3B Protein (Myc-DYKDDDDK Tag)



[Go to Product page](#)

1 Image

Overview

Quantity:	20 µg
Target:	NMDAR3A + 3B (GRIN3A/B)
Origin:	Human
Source:	HEK-293 Cells
Protein Type:	Recombinant
Purification tag / Conjugate:	This NMDAR3A + 3B protein is labelled with Myc-DYKDDDDK Tag.
Application:	Antibody Production (AbP), Standard (STD)

Product Details

Characteristics:	<ul style="list-style-type: none">• Recombinant human NMDAR3A / 3B protein expressed in HEK293 cells.• Produced with end-sequenced ORF clone
------------------	---

Purity:	> 80 % as determined by SDS-PAGE and Coomassie blue staining
---------	--

Target Details

Target:	NMDAR3A + 3B (GRIN3A/B)
---------	-------------------------

Alternative Name:	Nmdar3a,3b (GRIN3A/B Products)
-------------------	--

Background:	This gene encodes a subunit of the N-methyl-D-aspartate (NMDA) receptors, which belong to the superfamily of glutamate-regulated ion channels, and function in physiological and pathological processes in the central nervous system. This subunit shows greater than 90 % identity to the corresponding subunit in rat. Studies in the knockout mouse deficient in this subunit suggest that this gene may be involved in the development of synaptic elements by
-------------	---

Target Details

modulating NMDA receptor activity.

Molecular Weight: 125.3 kDa

NCBI Accession: [NP_597702](#)

Application Details

Application Notes: Recombinant human proteins can be used for:
Native antigens for optimized antibody production
Positive controls in ELISA and other antibody assays

Comment: The tag is located at the C-terminal.

Restrictions: For Research Use only

Handling

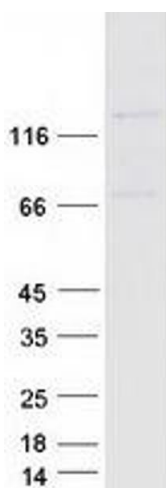
Concentration: 50 µg/mL

Buffer: 25 mM Tris.HCl, pH 7.3, 100 mM glycine, 10 % glycerol.

Storage: -80 °C

Storage Comment: Store at -80°C. Thaw on ice, aliquot to individual single-use tubes, and then re-freeze immediately. Only 2-3 freeze thaw cycles are recommended.

Images



Western Blotting

Image 1. Validation with Western Blot