

Datasheet for ABIN2727439

**NOM03 Protein (Myc-DYKDDDDK Tag)**[Go to Product page](#)**1** Image

## Overview

|                               |   |
|-------------------------------|---|
| Quantity:                     | 20 µg   |
| Target:                       | NOM03   |
| Origin:                       | Human   |
| Source:                       | HEK-293 Cells   |
| Protein Type:                 | Recombinant   |
| Purification tag / Conjugate: | This NOM03 protein is labelled with Myc-DYKDDDDK Tag. |
| Application:                  | Antibody Production (AbP), Standard (STD)             |

## Product Details

|                  |  |
|------------------|--|
| Characteristics: | <ul style="list-style-type: none"><li>• Recombinant human NODAL modulator 3 (NOM03) protein expressed in HEK293 cells.</li><li>• Produced with end-sequenced ORF clone</li></ul> |
| Purity:          | > 80 % as determined by SDS-PAGE and Coomassie blue staining   |

## Target Details

|             |   |
|-------------|---|
| Target:     | NOM03   |
| Abstract:   | <a href="#">NOM03 Products</a>  |
| Background: | <p>This gene encodes a protein originally thought to be related to the collagenase gene family.</p> <p>This gene is one of three highly similar genes in a duplicated region on the short arm of chromosome 16. These three genes encode closely related proteins that may have the same function. The protein encoded by one of these genes has been identified as part of a protein complex that participates in the Nodal signaling pathway during vertebrate development.</p> |

## Target Details

|                   |   |
|-------------------|---|
|                   | Mutations in ABCC6, which is located nearby, rather than mutations in this gene are associated with pseudoxanthoma elasticum. |
| Molecular Weight: | 134 kDa   |
| NCBI Accession:   | <a href="#">NP_001004067</a>  |

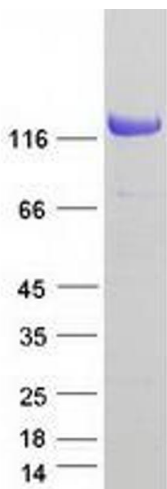
## Application Details

|                    |  |
|--------------------|--|
| Application Notes: | Recombinant human proteins can be used for:<br>Native antigens for optimized antibody production<br>Positive controls in ELISA and other antibody assays |
| Comment:           | The tag is located at the C-terminal.  |
| Restrictions:      | For Research Use only  |

## Handling

|                  |   |
|------------------|---|
| Concentration:   | 50 µg/mL  |
| Buffer:          | 25 mM Tris.HCl, pH 7.3, 100 mM glycine, 10 % glycerol.  |
| Storage:         | -80 °C  |
| Storage Comment: | Store at -80°C. Thaw on ice, aliquot to individual single-use tubes, and then re-freeze immediately. Only 2-3 freeze thaw cycles are recommended. |

## Images



### Western Blotting

**Image 1.** Validation with Western Blot