

Datasheet for ABIN2727651
NSMCE2 Protein (His tag)[Go to Product page](#)

1 Image

Overview

Quantity:	50 µg
Target:	NSMCE2
Origin:	Human
Source:	Escherichia coli (E. coli)
Protein Type:	Recombinant
Purification tag / Conjugate:	This NSMCE2 protein is labelled with His tag.
Application:	Antibody Production (AbP), Standard (STD)

Product Details

Characteristics:	<ul style="list-style-type: none">• Recombinant human NSMCE2 (full length, N-term HIS tag) protein expressed in E.coli.• Produced with end-sequenced ORF clone
Purity:	> 80 % as determined by SDS-PAGE and Coomassie blue staining

Target Details

Target:	NSMCE2
Alternative Name:	Nsmce2 (NSMCE2 Products)
Background:	This gene encodes a member of a family of E3 small ubiquitin-related modifier (SUMO) ligases that mediates the attachment of a SUMO protein to proteins involved in nuclear transport, transcription, chromosome segregation and DNA repair. The encoded protein is part of the structural maintenance of chromosomes (SMC) 5/6 complex which plays a key role genome maintenance, facilitating chromosome segregation and suppressing mitotic recombination. A

Target Details

knockout of the orthologous mouse gene is lethal prior to embryonic day 10.5. Naturally occurring mutations in this gene, that abolish the SUMO ligase activity, are associated with primordial dwarfism and extreme insulin resistance.

Molecular Weight: 27.8 kDa

NCBI Accession: [NP_775956](#)

Application Details

Application Notes: Recombinant human proteins can be used for:
Native antigens for optimized antibody production
Positive controls in ELISA and other antibody assays

Comment: The tag is located at the N-terminal.

Restrictions: For Research Use only

Handling

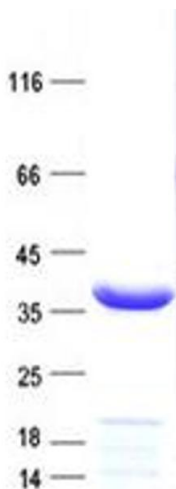
Concentration: 50 µg/mL

Buffer: 25 mM Tris, pH 8.0, 150 mM NaCl, 10 % glycerol, 1 % Sarkosyl.

Storage: -80 °C

Storage Comment: Store at -80°C. Thaw on ice, aliquot to individual single-use tubes, and then re-freeze immediately. Only 2-3 freeze thaw cycles are recommended.

Images



Western Blotting

Image 1. Validation with Western Blot