

Datasheet for ABIN2727674  
**NTAN1 Protein (Myc-DYKDDDDK Tag)**[Go to Product page](#)

## 1 Image

## Overview

|                               |   |
|-------------------------------|---|
| Quantity:                     | 20 µg   |
| Target:                       | NTAN1   |
| Origin:                       | Human   |
| Source:                       | HEK-293 Cells   |
| Protein Type:                 | Recombinant   |
| Purification tag / Conjugate: | This NTAN1 protein is labelled with Myc-DYKDDDDK Tag. |
| Application:                  | Antibody Production (AbP), Standard (STD)             |

## Product Details

|                  |  |
|------------------|--|
| Characteristics: | <ul style="list-style-type: none"><li>• Recombinant human NTAN1 protein expressed in HEK293 cells.</li><li>• Produced with end-sequenced ORF clone</li></ul> |
| Purity:          | > 80 % as determined by SDS-PAGE and Coomassie blue staining   |

## Target Details

|                   |   |
|-------------------|---|
| Target:           | NTAN1   |
| Alternative Name: | Ntan1 ( <a href="#">NTAN1 Products</a> )  |
| Background:       | The protein encoded by this gene functions in a step-wise process of protein degradation through the N-end rule pathway. This protein acts as a tertiary destabilizing enzyme that deamidates N-terminal L-Asn residues on proteins to produce N-terminal L-Asp. L-Asp substrates are subsequently conjugated to L-Arg, which is recognized by specific E3 ubiquitin ligases and targeted to the proteasome. Pseudogenes of this gene are located on the long |

## Target Details

|                   |  |
|-------------------|--|
|                   | arms of chromosomes 8, 10 and 12. Alternative splicing results in multiple transcript variants that encode different protein isoforms. |
| Molecular Weight: | 34.5 kDa   |
| NCBI Accession:   | <a href="#">NP_775745</a>  |

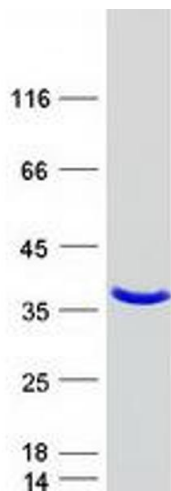
## Application Details

|                    |  |
|--------------------|--|
| Application Notes: | Recombinant human proteins can be used for:<br>Native antigens for optimized antibody production<br>Positive controls in ELISA and other antibody assays |
| Comment:           | The tag is located at the C-terminal.  |
| Restrictions:      | For Research Use only  |

## Handling

|                  |   |
|------------------|---|
| Concentration:   | 50 µg/mL  |
| Buffer:          | 25 mM Tris.HCl, pH 7.3, 100 mM glycine, 10 % glycerol.  |
| Storage:         | -80 °C  |
| Storage Comment: | Store at -80°C. Thaw on ice, aliquot to individual single-use tubes, and then re-freeze immediately. Only 2-3 freeze thaw cycles are recommended. |

## Images



### Western Blotting

**Image 1.** Validation with Western Blot