



[Go to Product page](#)

Datasheet for ABIN2727915
anti-ONECUT1 antibody (AA 85-198)

3 Images

Overview

Quantity:	0.1 mL
Target:	ONECUT1
Binding Specificity:	AA 85-198
Reactivity:	Human
Host:	Mouse
Clonality:	Monoclonal
Conjugate:	This ONECUT1 antibody is un-conjugated
Application:	Western Blotting (WB), Immunohistochemistry (IHC), Immunofluorescence (IF)

Product Details

Immunogen:	Human recombinant protein fragment corresponding to amino acids 85-198 of human HNF6 (NP_004489) produced in E.coli.
Clone:	4F12
Isotype:	IgG1
Purification:	Purified from mouse ascites fluids by affinity chromatography

Target Details

Target:	ONECUT1
Alternative Name:	HNF6 (ONECUT1 Products)
Molecular Weight:	50.8 kDa

Target Details

Gene ID: 3175

NCBI Accession: [NM_004498](#)

HGNC: 3175

Application Details

Application Notes: WB 1:500, IHC 1:50, IF 1:100,

Comment: The concentration of the product may vary between different lots.

Restrictions: For Research Use only

Handling

Format: Liquid

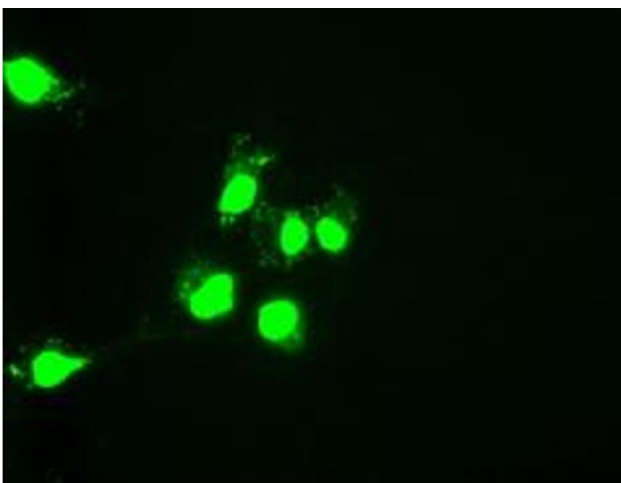
Concentration: 0.5-1.0 mg/mL

Buffer: PBS (pH 7.3) containing 1 % BSA, 50 % glycerol and 0.02 % sodium azide.

Preservative: Sodium azide

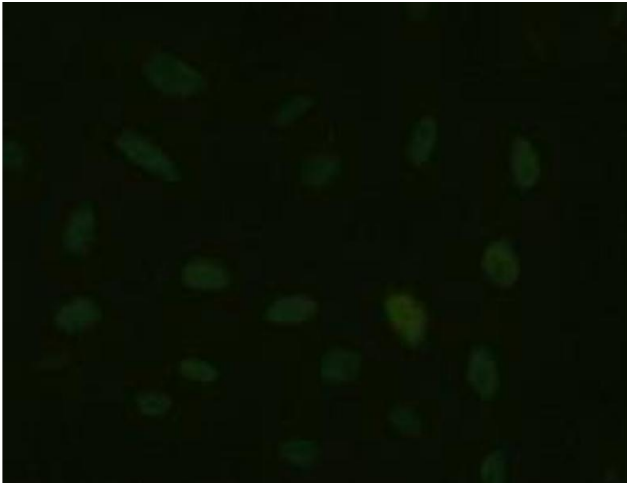
Precaution of Use: This product contains sodium azide: a POISONOUS AND HAZARDOUS SUBSTANCE which should be handled by trained staff only.

Images



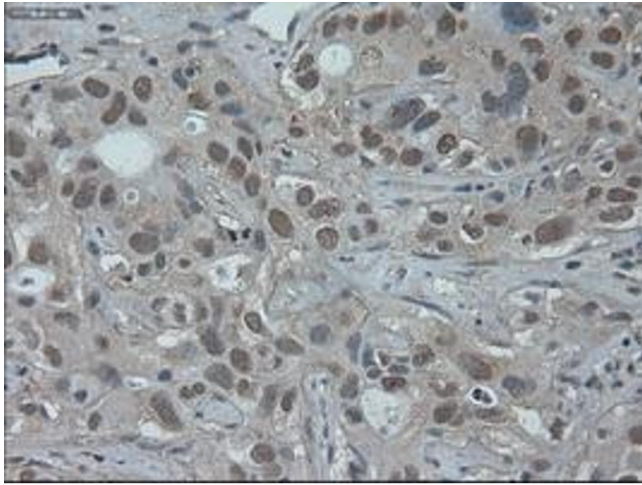
Immunofluorescence

Image 1. Anti-HNF6 mouse monoclonal antibody (ABIN2452681) immunofluorescent staining of COS7 cells transiently transfected by pCMV6-ENTRY HNF6 (RC218219).



Immunofluorescence

Image 2. Immunofluorescent staining of HeLa cells using anti-HNF6 mouse monoclonal antibody (ABIN2452681).



Immunohistochemistry

Image 3. Immunohistochemical staining of paraffin-embedded Carcinoma of liver using anti-HNF6 (ABIN2452681) mouse monoclonal antibody.