

Datasheet for ABIN2727931
ORC6 Protein (Myc-DYKDDDDK Tag)[Go to Product page](#)

1 Image

Overview

| | |
|-------------------------------|--|
| Quantity: | 20 µg |
| Target: | ORC6 |
| Origin: | Human |
| Source: | HEK-293 Cells |
| Protein Type: | Recombinant |
| Purification tag / Conjugate: | This ORC6 protein is labelled with Myc-DYKDDDDK Tag. |
| Application: | Antibody Production (AbP), Standard (STD) |

Product Details

| | |
|------------------|---|
| Characteristics: | <ul style="list-style-type: none">• Recombinant human ORC6 protein expressed in HEK293 cells.• Produced with end-sequenced ORF clone |
| Purity: | > 80 % as determined by SDS-PAGE and Coomassie blue staining |

Target Details

| | |
|-------------------|---|
| Target: | ORC6 |
| Alternative Name: | Orc6 (ORC6 Products) |
| Background: | The origin recognition complex (ORC) is a highly conserved six subunit protein complex essential for the initiation of the DNA replication in eukaryotic cells. Studies in yeast demonstrated that ORC binds specifically to origins of replication and serves as a platform for the assembly of additional initiation factors such as Cdc6 and Mcm proteins. The protein encoded by this gene is a subunit of the ORC complex. Gene silencing studies with small |

Target Details

| | |
|-------------------|---|
| | interfering RNA demonstrated that this protein plays an essential role in coordinating chromosome replication and segregation with cytokinesis. |
| Molecular Weight: | 27.9 kDa |
| NCBI Accession: | NP_055136 |
| Pathways: | Mitotic G1-G1/S Phases , DNA Replication , M Phase , Synthesis of DNA |

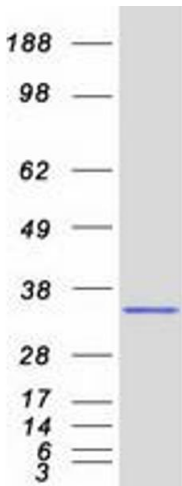
Application Details

| | |
|--------------------|--|
| Application Notes: | Recombinant human proteins can be used for: Native antigens for optimized antibody production Positive controls in ELISA and other antibody assays |
| Comment: | The tag is located at the C-terminal. |
| Restrictions: | For Research Use only |

Handling

| | |
|------------------|---|
| Concentration: | 50 µg/mL |
| Buffer: | 25 mM Tris.HCl, pH 7.3, 100 mM glycine, 10 % glycerol. |
| Storage: | -80 °C |
| Storage Comment: | Store at -80°C. Thaw on ice, aliquot to individual single-use tubes, and then re-freeze immediately. Only 2-3 freeze thaw cycles are recommended. |

Images



Western Blotting

Image 1. Validation with Western Blot