

Datasheet for ABIN2728127  
**anti-PAD4 antibody**



[Go to Product page](#)

3 Images

## Overview

Quantity:	0.1 mL
Target:	PAD4 (PADI4)
Reactivity:	Human
Host:	Mouse
Clonality:	Monoclonal
Conjugate:	This PAD4 antibody is un-conjugated
Application:	Western Blotting (WB), Immunohistochemistry (IHC), Immunofluorescence (IF), Flow Cytometry (FACS)

## Product Details

Immunogen:	Human recombinant protein fragment corresponding to amino acids 299-588 of human PADI4(NP_036519) produced in E.coli.
Clone:	6A2
Isotype:	IgG1
Characteristics:	Homo sapiens peptidyl arginine deiminase, type IV (PADI4)
Purification:	Purified from mouse ascites fluids by affinity chromatography

## Target Details

Target:	PAD4 (PADI4)
Alternative Name:	PADI4 ( <a href="#">PADI4 Products</a> )

## Target Details

---

Background:	This gene is a member of a gene family which encodes enzymes responsible for the conversion of arginine residues to citrulline residues. This gene may play a role in granulocyte and macrophage development leading to inflammation and immune response.
Molecular Weight:	73.9 kDa
Gene ID:	23569
NCBI Accession:	<a href="#">NM_012387</a>
HGNC:	23569

## Application Details

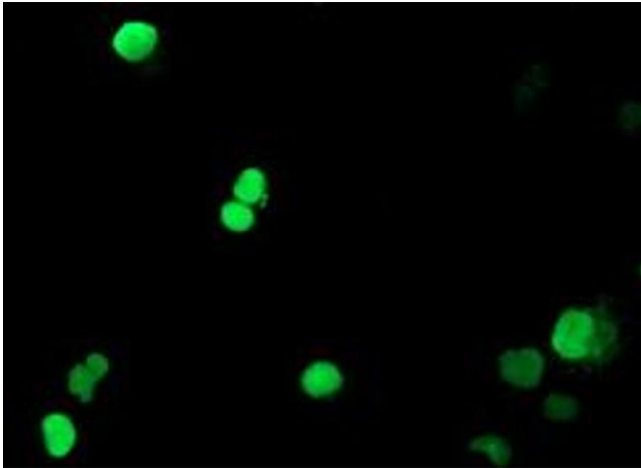
---

Application Notes:	WB 1:500~1000, IHC 1:150, IF 1:100, FLOW 1:100,
Comment:	The concentration of the product may vary between diferrent lots.
Restrictions:	For Research Use only

## Handling

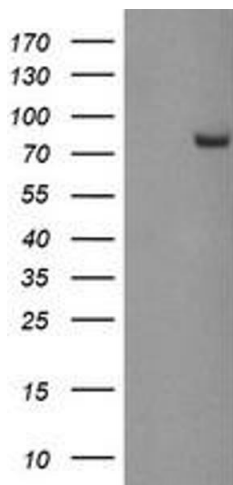
---

Format:	Liquid
Concentration:	0.5-1.0 mg/mL
Buffer:	PBS (PH 7.3) containing 1 % BSA, 50 % glycerol and 0.02 % sodium azide.
Preservative:	Sodium azide
Precaution of Use:	This product contains sodium azide: a POISONOUS AND HAZARDOUS SUBSTANCE which should be handled by trained staff only.
Storage:	-20 °C



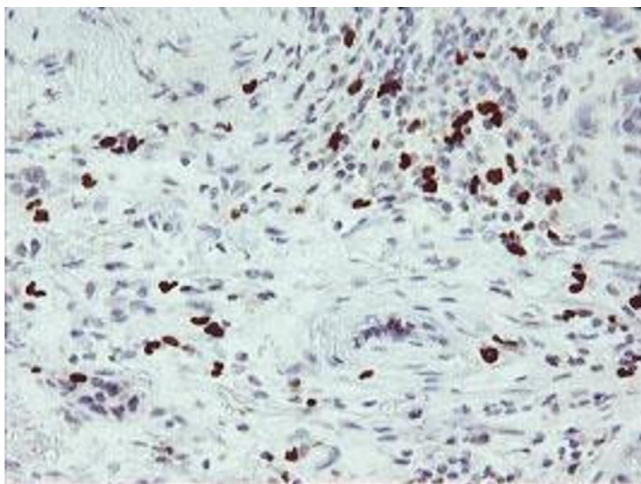
### Immunofluorescence

**Image 1.** Anti-PADI4 mouse monoclonal antibody (ABIN2455883) immunofluorescent staining of COS7 cells transiently transfected by pCMV6-ENTRY PADI4 (RC206501).



### Western Blotting

**Image 2.** HEK293T cells were transfected with the pCMV6-ENTRY control (Left lane) or pCMV6-ENTRY PADI4 (Right lane) cDNA for 48 hrs and lysed. Equivalent amounts of cell lysates (5 µg per lane) were separated by SDS-PAGE and immunoblotted with anti-PADI4.



### Immunohistochemistry

**Image 3.** Immunohistochemical staining of paraffin-embedded Carcinoma of Human lung tissue using anti-PADI4 mouse monoclonal antibody. (ABIN2455883)