

Datasheet for ABIN2728471

anti-PDE10A antibody**3** Images**1** Publication[Go to Product page](#)

Overview

Quantity:	0.1 mL
Target:	PDE10A
Reactivity:	Human
Host:	Mouse
Clonality:	Monoclonal
Application:	Western Blotting (WB), Immunohistochemistry (IHC)

Product Details

Immunogen:	Full-length protein expressed in 293T cell transfected with human PDE10A expression vector
Clone:	1B2
Isotype:	IgG1
Purification:	Purified from mouse ascites fluids by affinity chromatography

Target Details

Target:	PDE10A
Alternative Name:	PDE10A (PDE10A Products)
Molecular Weight:	88.4 KDa
Gene ID:	10846
NCBI Accession:	NM_006661
HGNC:	10846

Target Details

Pathways: [cAMP Metabolic Process](#)

Application Details

Application Notes: WB 1:500, IHC 1:50,

Comment: The concentration of the product may vary between different lots.

Restrictions: For Research Use only

Handling

Format: Liquid

Concentration: 0.5-1.0 mg/mL

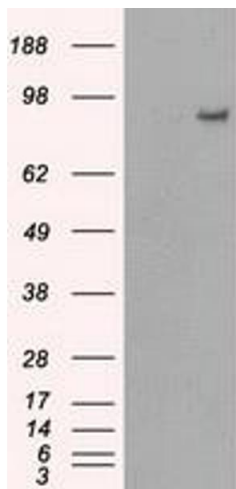
Buffer: PBS (pH 7.3) containing 1 % BSA, 50 % glycerol and 0.02 % sodium azide.

Preservative: Sodium azide

Precaution of Use: This product contains sodium azide: a POISONOUS AND HAZARDOUS SUBSTANCE which should be handled by trained staff only.

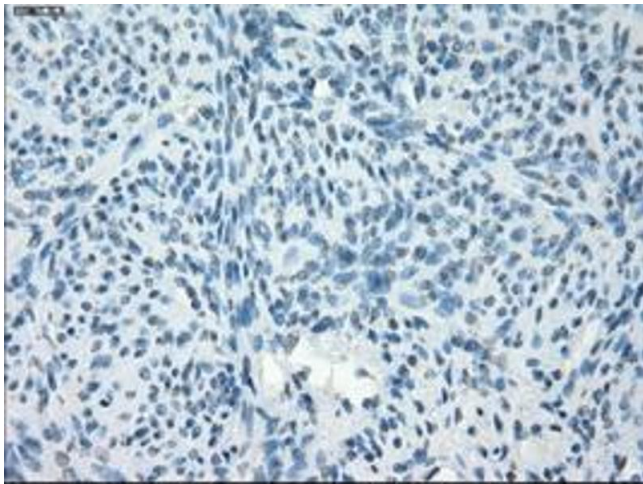
Publications

Product cited in: Markmiller, Soltanieh, Server, Mak, Jin, Fang, Luo, Krach, Yang, Sen, Fulzele, Wozniak, Gonzalez, Kankel, Gao, Bennett, Lécuyer, Yeo: "Context-Dependent and Disease-Specific Diversity in Protein Interactions within Stress Granules." in: **Cell**, Vol. 172, Issue 3, pp. 590-604.e13, (2019) ([PubMed](#)).



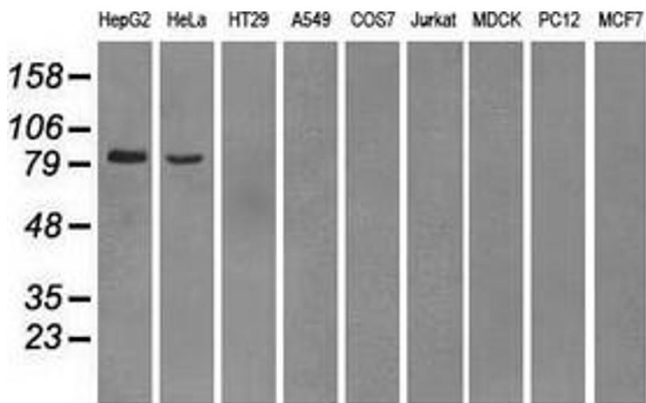
Western Blotting

Image 1. HEK293T cells were transfected with the pCMV6-ENTRY control (Left lane) or pCMV6-ENTRY PDE10A (Right lane) cDNA for 48 hrs and lysed. Equivalent amounts of cell lysates (5 µg per lane) were separated by SDS-PAGE and immunoblotted with anti-PDE10A.



Immunohistochemistry

Image 2. Immunohistochemical staining of paraffin-embedded endometrium tissue using anti-PDE10A mouse monoclonal antibody. (ABIN2452521, Dilution 1:50)



Western Blotting

Image 3. Western blot analysis of extracts (35 µg) from 9 different cell lines by using anti-PDE10A monoclonal antibody.