

Datasheet for ABIN2728472

anti-PDE10A antibody

2 Images

[Go to Product page](#)

Overview

Quantity:	0.1 mL
Target:	PDE10A
Reactivity:	Human
Host:	Mouse
Clonality:	Monoclonal
Application:	Immunofluorescence (IF), Flow Cytometry (FACS)

Product Details

Immunogen:	Full length human recombinant protein of human PDE10A (NP_006652) produced in HEK293T cell.
Clone:	3G9
Isotype:	IgG2b
Purification:	Purified from mouse ascites fluids by affinity chromatography

Target Details

Target:	PDE10A
Alternative Name:	PDE10A (PDE10A Products)
Gene ID:	10846
NCBI Accession:	NM_006661
HGNC:	10846

Target Details

Pathways: [cAMP Metabolic Process](#)

Application Details

Application Notes: IF 1:100, FLOW 1:100,

Comment: The concentration of the product may vary between different lots.

Restrictions: For Research Use only

Handling

Format: Liquid

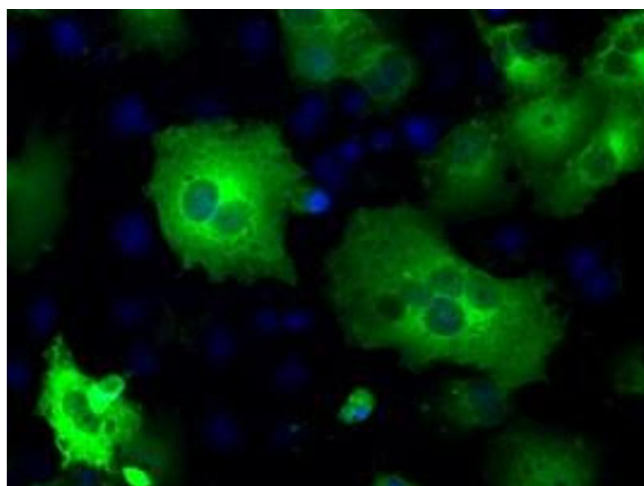
Concentration: 0.5-1.0 mg/mL

Buffer: PBS (pH 7.3) containing 1 % BSA, 50 % glycerol and 0.02 % sodium azide.

Preservative: Sodium azide

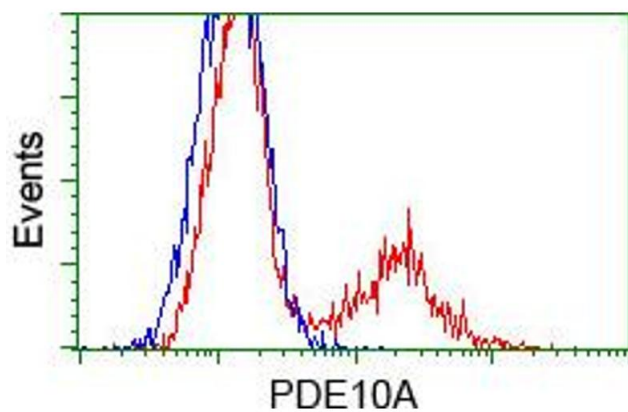
Precaution of Use: This product contains sodium azide: a POISONOUS AND HAZARDOUS SUBSTANCE which should be handled by trained staff only.

Images



Immunofluorescence

Image 1. Anti-PDE10A mouse monoclonal antibody (ABIN2453429) immunofluorescent staining of COS7 cells transiently transfected by pCMV6-ENTRY PDE10A (RC211181).



Flow Cytometry

Image 2. HEK293T cells transfected with either pCMV6-ENTRY PDE10A (RC211181) (Red) or empty vector control plasmid (Blue) were immunostained with anti-PDE10A mouse monoclonal (ABIN2453429, Dilution 1:1,000), and then analyzed by flow cytometry.