

Datasheet for ABIN2728536

PDGFA Protein[Go to Product page](#)**1** Image

Overview

Quantity:	10 µg
Target:	PDGFA
Origin:	Mouse
Source:	Escherichia coli (E. coli)
Protein Type:	Recombinant
Biological Activity:	Active
Application:	Functional Studies (Func), Antibody Production (AbP), Standard (STD), Protein Interaction (PI)

Product Details

Specificity:	Optimal preservation of protein structure, post-translational modifications and functions.
Characteristics:	<ul style="list-style-type: none">• Recombinant human PDGFA protein expressed in E. coli.• Produced with end-sequenced ORF clone• Tested for bioactivity.
Purity:	> 95 % as determined by SDS-PAGE and Coomassie blue staining
Endotoxin Level:	Endotoxin level is <0.1 ng/µg of protein (<1EU/µg).
Biological Activity Comment:	ED50 as determined by the dose-dependent stimulation of thymidine uptake by BALB/c 3T3 cells is less than or equal to 1 ng/ml, corresponding to a specific activity of > 1 x 10 ⁶ units/mg.

Target Details

Target:	PDGFA
Alternative Name:	Pdgfa (PDGFA Products)

Target Details

Molecular Weight:	25.5 kDa
NCBI Accession:	NP_032834
Pathways:	RTK Signaling , Fc-epsilon Receptor Signaling Pathway , EGFR Signaling Pathway , Neurotrophin Signaling Pathway , Smooth Muscle Cell Migration , Platelet-derived growth Factor Receptor Signaling

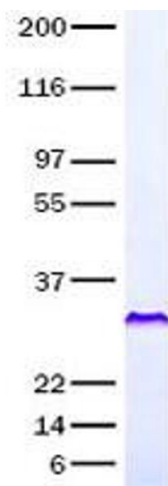
Application Details

Application Notes:	Recombinant human proteins can be used for: Native antigens for optimized antibody production Positive controls in ELISA and other antibody assays Protein-protein interaction In vitro biochemical assays and cell-based functional assays
Restrictions:	For Research Use only

Handling

Buffer:	Lyophilized from a 0.2 µM filtered solution of 20 mM phosphate buffer, 100 mM NaCl, pH 7.2
Handling Advice:	Resuspend the protein in the desired concentration in proper buffer
Storage:	-80 °C
Storage Comment:	Store at -80°C. Thaw on ice, aliquot to individual single-use tubes, and then re-freeze immediately. Only 2-3 freeze thaw cycles are recommended.

Images



Western Blotting

Image 1. Validation with Western Blot