

Datasheet for ABIN2728700

**Peroxiredoxin 1 Protein (PRDX1) (Transcript Variant 3) (Myc-DYKDDDDK Tag)**[Go to Product page](#)**1** Image

## Overview

Quantity:	20 µg
Target:	Peroxiredoxin 1 (PRDX1)
Protein Characteristics:	Transcript Variant 3
Origin:	Human
Source:	HEK-293 Cells
Protein Type:	Recombinant
Purification tag / Conjugate:	This Peroxiredoxin 1 protein is labelled with Myc-DYKDDDDK Tag.
Application:	Antibody Production (AbP), Standard (STD)

## Product Details

Characteristics:	<ul style="list-style-type: none"><li>• Recombinant human Peroxiredoxin-1 / PRDX1 (transcript variant 3) protein expressed in HEK293 cells.</li><li>• Produced with end-sequenced ORF clone</li></ul>
Purity:	> 80 % as determined by SDS-PAGE and Coomassie blue staining

## Target Details

Target:	Peroxiredoxin 1 (PRDX1)
Alternative Name:	Peroxiredoxin-1,prdx1 ( <a href="#">PRDX1 Products</a> )
Background:	This gene encodes a member of the peroxiredoxin family of antioxidant enzymes, which reduce hydrogen peroxide and alkyl hydroperoxides. The encoded protein may play an antioxidant protective role in cells, and may contribute to the antiviral activity of CD8(+) T-cells. This protein

## Target Details

may have a proliferative effect and play a role in cancer development or progression. Four transcript variants encoding the same protein have been identified for this gene.

Molecular Weight:	21.9 kDa
NCBI Accession:	<a href="#">NP_859048</a>
Pathways:	<a href="#">p53 Signaling</a> , <a href="#">EGFR Signaling Pathway</a> , <a href="#">CXCR4-mediated Signaling Events</a>

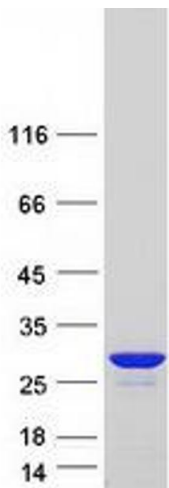
## Application Details

Application Notes:	Recombinant human proteins can be used for: Native antigens for optimized antibody production Positive controls in ELISA and other antibody assays
Comment:	The tag is located at the C-terminal.
Restrictions:	For Research Use only

## Handling

Concentration:	50 µg/mL
Buffer:	25 mM Tris.HCl, pH 7.3, 100 mM glycine, 10 % glycerol.
Storage:	-80 °C
Storage Comment:	Store at -80°C. Thaw on ice, aliquot to individual single-use tubes, and then re-freeze immediately. Only 2-3 freeze thaw cycles are recommended.

## Images



**Western Blotting**

**Image 1.** Validation with Western Blot