

Datasheet for ABIN2728781

**PGBD3 Protein (Myc-DYKDDDDK Tag)**[Go to Product page](#)**1** Image

## Overview

Quantity:	20 µg
Target:	PGBD3
Origin:	Human
Source:	HEK-293 Cells
Protein Type:	Recombinant
Purification tag / Conjugate:	This PGBD3 protein is labelled with Myc-DYKDDDDK Tag.
Application:	Antibody Production (AbP), Standard (STD)

## Product Details

Characteristics:	<ul style="list-style-type: none"><li>• Recombinant human PGBD3 protein expressed in HEK293 cells.</li><li>• Produced with end-sequenced ORF clone</li></ul>
Purity:	> 80 % as determined by SDS-PAGE and Coomassie blue staining

## Target Details

Target:	PGBD3
Alternative Name:	Pgbd3 ( <a href="#">PGBD3 Products</a> )
Background:	This gene is a member of a small family of genes derived from piggyBac transposable elements. The encoded protein contains a zinc-ribbon domain characteristic of transposon-derived proteins and may function as a regulator of transcription. Alternative splicing occurs between a splice site from exon 5 of the adjacent upstream gene 'excision repair cross-complementation group 6' (ERCC6, GeneID: 2074) and the 3' splice site upstream of

## Target Details

the open reading frame (ORF) of this gene, which activates the alternative polyadenylation site downstream of the piggyback-derived-3 ORF. The resulting transcripts encode a fusion protein that shares sequence with the product of each individual gene. Pseudogenes for this gene are defined on chromosomes 4, 5 and 12.

Molecular Weight: 67.4 kDa

NCBI Accession: [NP\\_736609](#)

Pathways: [Chromatin Binding](#)

## Application Details

Application Notes: Recombinant human proteins can be used for:  
Native antigens for optimized antibody production  
Positive controls in ELISA and other antibody assays

Comment: The tag is located at the C-terminal.

Restrictions: For Research Use only

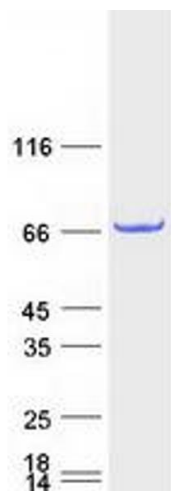
## Handling

Concentration: 50 µg/mL

Buffer: 25 mM Tris.HCl, pH 7.3, 100 mM glycine, 10 % glycerol.

Storage: -80 °C

Storage Comment: Store at -80°C. Thaw on ice, aliquot to individual single-use tubes, and then re-freeze immediately. Only 2-3 freeze thaw cycles are recommended.



Western Blotting

**Image 1.** Validation with Western Blot