



[Go to Product page](#)

Datasheet for ABIN2728787

## PGLYRP2 Protein (Myc-DYKDDDDK Tag)

1 Image

1 Publication

### Overview

Quantity:	20 µg
Target:	PGLYRP2
Origin:	Human
Source:	HEK-293 Cells
Protein Type:	Recombinant
Purification tag / Conjugate:	This PGLYRP2 protein is labelled with Myc-DYKDDDDK Tag.
Application:	Antibody Production (AbP), Standard (STD)

### Product Details

Characteristics:

- Recombinant human PGLYRP2 protein expressed in HEK293 cells.
- Produced with end-sequenced ORF clone

Purity: > 80 % as determined by SDS-PAGE and Coomassie blue staining

### Target Details

Target: PGLYRP2

Alternative Name: Pglyrp2 ([PGLYRP2 Products](#))

Background: This gene encodes a peptidoglycan recognition protein, which belongs to the N-acetylmuramoyl-L-alanine amidase 2 family. This protein hydrolyzes the link between N-acetylmuramoyl residues and L-amino acid residues in bacterial cell wall glycopeptides, and thus may play a scavenger role by digesting biologically active peptidoglycan into biologically inactive fragments.

## Target Details

---

Molecular Weight: 62 kDa

NCBI Accession: [NP\\_443122](#)

Pathways: [Activation of Innate immune Response](#), [Glycosaminoglycan Metabolic Process](#)

## Application Details

---

Application Notes: Recombinant human proteins can be used for:  
Native antigens for optimized antibody production  
Positive controls in ELISA and other antibody assays

Comment: The tag is located at the C-terminal.

Restrictions: For Research Use only

## Handling

---

Concentration: 50 µg/mL

Buffer: 25 mM Tris.HCl, pH 7.3, 100 mM glycine, 10 % glycerol.

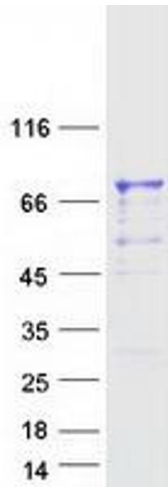
Storage: -80 °C

Storage Comment: Store at -80°C. Thaw on ice, aliquot to individual single-use tubes, and then re-freeze immediately. Only 2-3 freeze thaw cycles are recommended.

## Publications

---

Product cited in: Hua, Yuan, Li, Coursey, Pflugfelder, Li: "A Novel Innate Response of Human Corneal Epithelium to Heat-killed *Candida albicans* by Producing Peptidoglycan Recognition Proteins." in: **PLoS ONE**, Vol. 10, Issue 6, pp. e0128039, (2015) ([PubMed](#)).



### Western Blotting

**Image 1.** Validation with Western Blot