

Datasheet for ABIN2729035

PKIB Protein (Transcript Variant 3) (His tag)[Go to Product page](#)**1** Image

Overview

Quantity:	10 µg
Target:	PKIB
Protein Characteristics:	Transcript Variant 3
Origin:	Human
Source:	Escherichia coli (E. coli)
Protein Type:	Recombinant
Purification tag / Conjugate:	This PKIB protein is labelled with His tag.
Application:	Antibody Production (AbP), Standard (STD)

Product Details

Characteristics:	<ul style="list-style-type: none">• Recombinant human PKIB (transcript variant 3) protein expressed in E. coli.• Produced with end-sequenced ORF clone
Purity:	> 95 % as determined by SDS-PAGE and Coomassie blue staining
Endotoxin Level:	< 0.1 EU per µg protein as determined by LAL test

Target Details

Target:	PKIB
Alternative Name:	Pkib (PKIB Products)
Background:	This gene encodes a member of the cAMP-dependent protein kinase inhibitor family. The encoded protein may play a role in the protein kinase A (PKA) pathway by interacting with the

Target Details

catalytic subunit of PKA, and overexpression of this gene may play a role in prostate cancer. Alternatively spliced transcript variants encoding multiple isoforms have been observed for this gene.

Molecular Weight: 10.6 kDa

NCBI Accession: [NP_115860](#)

Pathways: [Myometrial Relaxation and Contraction](#)

Application Details

Application Notes: Recombinant human proteins can be used for:
Native antigens for optimized antibody production
Positive controls in ELISA and other antibody assays

Comment: The tag is located at the C-terminal.

Restrictions: For Research Use only

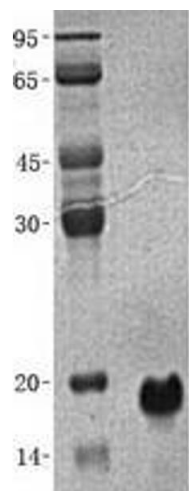
Handling

Concentration: 50 µg/mL

Buffer: 20 mM Tris-HCl, 100 mM NaCl, 1 mM DTT, 20 % Glycerol, pH 8.0. Avoid repeated freeze-thaw cycles. Stable for at least 3 months from receipt of products under proper storage and handling conditions.

Storage: -80 °C

Storage Comment: Store at -80°C. Thaw on ice, aliquot to individual single-use tubes, and then re-freeze immediately. Only 2-3 freeze thaw cycles are recommended.



Western Blotting

Image 1. Validation with Western Blot