

Datasheet for ABIN2729197

**PLTP Protein (Transcript Variant 2) (Myc-DYKDDDDK Tag)**[Go to Product page](#)**1** Image

## Overview

|                               |  |
|-------------------------------|--|
| Quantity:                     | 20 µg  |
| Target:                       | PLTP   |
| Protein Characteristics:      | Transcript Variant 2                                 |
| Origin:                       | Human  |
| Source:                       | HEK-293 Cells  |
| Protein Type:                 | Recombinant  |
| Purification tag / Conjugate: | This PLTP protein is labelled with Myc-DYKDDDDK Tag. |
| Application:                  | Antibody Production (AbP), Standard (STD)            |

## Product Details

|                  |  |
|------------------|--|
| Characteristics: | <ul style="list-style-type: none"><li>• Recombinant human PLTP (transcript variant 2) protein expressed in HEK293 cells.</li><li>• Produced with end-sequenced ORF clone</li></ul> |
| Purity:          | > 80 % as determined by SDS-PAGE and Coomassie blue staining   |

## Target Details

|                   |   |
|-------------------|---|
| Target:           | PLTP  |
| Alternative Name: | Pltp ( <a href="#">PLTP Products</a> )  |
| Background:       | The protein encoded by this gene is one of at least two lipid transfer proteins found in human plasma. The encoded protein transfers phospholipids from triglyceride-rich lipoproteins to high density lipoprotein (HDL). In addition to regulating the size of HDL particles, this protein may be involved in cholesterol metabolism. At least two transcript variants encoding different isoforms |

### Target Details

|                   |                                  |
|-------------------|----------------------------------|
|                   | have been found for this gene.   |
| Molecular Weight: | 47.6 kDa                         |
| NCBI Accession:   | <a href="#">NP_872617</a>        |
| Pathways:         | <a href="#">Lipid Metabolism</a> |

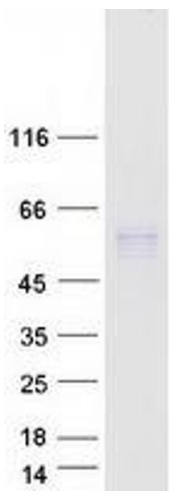
### Application Details

|                    |  |
|--------------------|--|
| Application Notes: | Recombinant human proteins can be used for:<br>Native antigens for optimized antibody production<br>Positive controls in ELISA and other antibody assays |
| Comment:           | The tag is located at the C-terminal.  |
| Restrictions:      | For Research Use only  |

### Handling

|                  |   |
|------------------|---|
| Concentration:   | 50 µg/mL  |
| Buffer:          | 25 mM Tris.HCl, pH 7.3, 100 mM glycine, 10 % glycerol.  |
| Storage:         | -80 °C  |
| Storage Comment: | Store at -80°C. Thaw on ice, aliquot to individual single-use tubes, and then re-freeze immediately. Only 2-3 freeze thaw cycles are recommended. |

### Images



#### Western Blotting

**Image 1.** Validation with Western Blot