



[Go to Product page](#)

Datasheet for ABIN2729242  
**PNMA3 Protein (His tag)**

1 Image

Overview

Quantity:	50 µg
Target:	PNMA3
Origin:	Human
Source:	Escherichia coli (E. coli)
Protein Type:	Recombinant
Purification tag / Conjugate:	This PNMA3 protein is labelled with His tag.
Application:	Antibody Production (AbP), Standard (STD)

Product Details

Characteristics:	<ul style="list-style-type: none"><li>• Recombinant human PNMA3 / MA3 (full length, N-term HIS tag) protein expressed in E.coli.</li><li>• Produced with end-sequenced ORF clone</li></ul>
Purity:	> 80 % as determined by SDS-PAGE and Coomassie blue staining

Target Details

Target:	PNMA3
Alternative Name:	Pnma3,ma3 ( <a href="#">PNMA3 Products</a> )
Background:	<p>The protein encoded by this gene belongs to the paraneoplastic antigen MA (PNMA) family, which shares homology with retroviral Gag proteins. The PNMA antigens are highly expressed in the brain and also in a range of tumors associated with serious neurological phenotypes. PMID:16407312 reports the presence of a functional -1 ribosomal frameshift signal (consisting of a heptanucleotide shift motif followed 3' by a pseudoknot structure) in this gene, however,</p>

## Target Details

the frame-shifted product has not been characterized. Alternatively spliced transcript variants encoding different isoforms have been found for this gene.

Molecular Weight: 52.2 kDa

NCBI Accession: [NP\\_037496](#)

## Application Details

Application Notes: Recombinant human proteins can be used for:  
Native antigens for optimized antibody production  
Positive controls in ELISA and other antibody assays

Comment: The tag is located at the N-terminal.

Restrictions: For Research Use only

## Handling

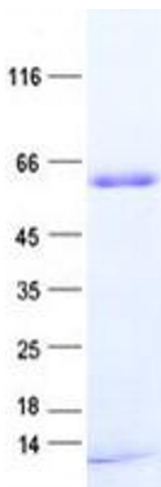
Concentration: 50 µg/mL

Buffer: 25 mM Tris, pH 8.0, 150 mM NaCl, 10 % glycerol, 1 % Sarkosyl.

Storage: -80 °C

Storage Comment: Store at -80°C. Thaw on ice, aliquot to individual single-use tubes, and then re-freeze immediately. Only 2-3 freeze thaw cycles are recommended.

## Images



### Western Blotting

**Image 1.** Validation with Western Blot