

Datasheet for ABIN2729279

**POF1B Protein (Myc-DYKDDDDK Tag)****1** Image[Go to Product page](#)

## Overview

Quantity:	20 µg
Target:	POF1B
Origin:	Human
Source:	HEK-293 Cells
Protein Type:	Recombinant
Purification tag / Conjugate:	This POF1B protein is labelled with Myc-DYKDDDDK Tag.
Application:	Antibody Production (AbP), Standard (STD)

## Product Details

Characteristics:	<ul style="list-style-type: none"><li>• Recombinant human POF1B protein expressed in HEK293 cells.</li><li>• Produced with end-sequenced ORF clone</li></ul>
Purity:	> 80 % as determined by SDS-PAGE and Coomassie blue staining

## Target Details

Target:	POF1B
Alternative Name:	Pof1b ( <a href="#">POF1B Products</a> )
Background:	Premature ovarian failure (POF) is characterized by primary or secondary amenorrhea in women less than 40 years old. Two POF susceptibility regions called "POF1" and "POF2" have been identified by breakpoint mapping of X-autosome translocations. POF1 extends from Xq21-qter while POF2 extends from Xq13.3 to Xq21.1. This gene, POF1B, resides in the POF2 region. This gene is expressed at trace levels in mouse prenatal ovary and is barely

## Target Details

detectable or absent from adult ovary, in human and in the mouse respectively. This gene's expression is restricted to epithelia with its highest expression in the epidermis, and oro-pharyngeal and gastro-intestinal tracts. The protein encoded by this gene binds non-muscle actin filaments. The role this gene may play in the etiology of premature ovarian failure remains to be determined.

Molecular Weight: 67.9 kDa

NCBI Accession: [NP\\_079197](#)

## Application Details

Application Notes: Recombinant human proteins can be used for:  
Native antigens for optimized antibody production  
Positive controls in ELISA and other antibody assays

Comment: The tag is located at the C-terminal.

Restrictions: For Research Use only

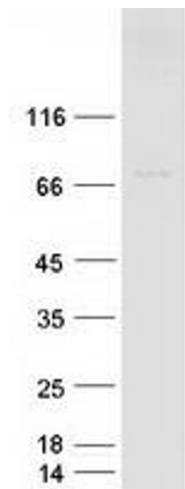
## Handling

Concentration: 50 µg/mL

Buffer: 25 mM Tris.HCl, pH 7.3, 100 mM glycine, 10 % glycerol.

Storage: -80 °C

Storage Comment: Store at -80°C. Thaw on ice, aliquot to individual single-use tubes, and then re-freeze immediately. Only 2-3 freeze thaw cycles are recommended.



Western Blotting

**Image 1.** Validation with Western Blot