

Datasheet for ABIN2729316

anti-POLR2E antibody**3** Images[Go to Product page](#)

Overview

Quantity:	0.1 mL
Target:	POLR2E
Reactivity:	Human, Mouse, Rat, Monkey, Dog
Host:	Mouse
Clonality:	Monoclonal
Conjugate:	This POLR2E antibody is un-conjugated
Application:	Western Blotting (WB), Immunohistochemistry (IHC), Immunofluorescence (IF), Flow Cytometry (FACS)

Product Details

Immunogen:	Full length human recombinant protein of human POLR2E(NP_002686) produced in HEK293T cell.
Clone:	3B5
Isotype:	IgG2a
Characteristics:	Homo sapiens polymerase (RNA) II (DNA directed) polypeptide E, 25 kDa (POLR2E)
Purification:	Purified from mouse ascites fluids by affinity chromatography

Target Details

Target:	POLR2E
Alternative Name:	POLR2E (POLR2E Products)

Target Details

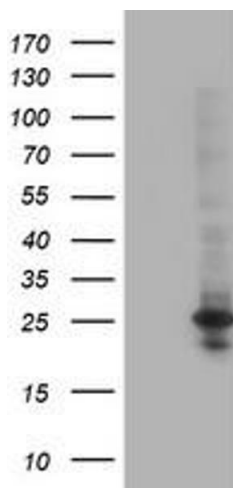
Background:	This gene encodes the fifth largest subunit of RNA polymerase II, the polymerase responsible for synthesizing messenger RNA in eukaryotes. This subunit is shared by the other two DNA-directed RNA polymerases and is present in two-fold molar excess over the other polymerase subunits. An interaction between this subunit and a hepatitis virus transactivating protein has been demonstrated, suggesting that interaction between transcriptional activators and the polymerase can occur through this subunit. A pseudogene is located on chromosome 11.
Molecular Weight:	24.4 kDa
Gene ID:	5434
NCBI Accession:	NM_002695
HGNC:	5434
Pathways:	Regulatory RNA Pathways

Application Details

Application Notes:	WB 1:500~2000, IHC 1:150, FLOW 1:100, IF: 1:100
Comment:	The concentration of the product may vary between different lots.
Restrictions:	For Research Use only

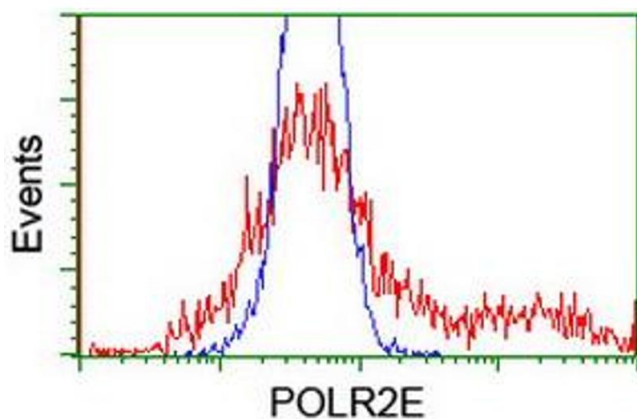
Handling

Format:	Liquid
Concentration:	0.5-1.0 mg/mL
Buffer:	PBS (PH 7.3) containing 1 % BSA, 50 % glycerol and 0.02 % sodium azide.
Preservative:	Sodium azide
Precaution of Use:	This product contains sodium azide: a POISONOUS AND HAZARDOUS SUBSTANCE which should be handled by trained staff only.
Storage:	-20 °C



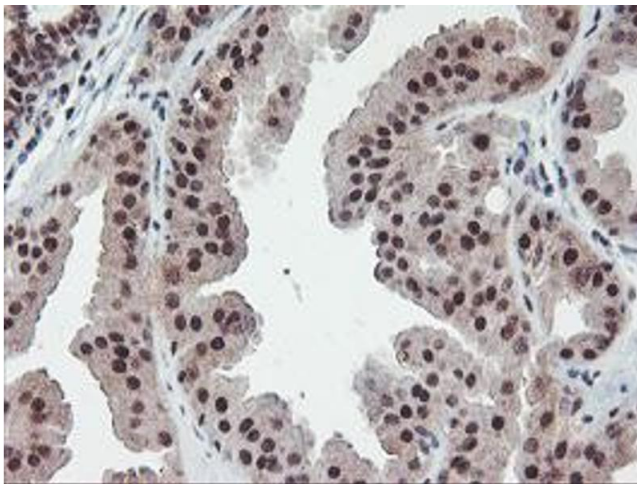
Western Blotting

Image 1. HEK293T cells were transfected with the pCMV6-ENTRY control (Left lane) or pCMV6-ENTRY POLR2E (Right lane) cDNA for 48 hrs and lysed. Equivalent amounts of cell lysates (5 µg per lane) were separated by SDS-PAGE and immunoblotted with anti-POLR2E.



Flow Cytometry

Image 2. HEK293T cells transfected with either RC201266 overexpress plasmid (Red) or empty vector control plasmid (Blue) were immunostained by anti-POLR2E antibody (ABIN2454321), and then analyzed by flow cytometry.



Immunohistochemistry

Image 3. Immunohistochemical staining of paraffin-embedded Human breast tissue using anti-POLR2E mouse monoclonal antibody. (ABIN2454321)