



[Go to Product page](#)

Datasheet for ABIN2729455
anti-PPME1 antibody

3 Images

Overview

Quantity:	0.1 mL
Target:	PPME1
Reactivity:	Human
Host:	Mouse
Clonality:	Monoclonal
Conjugate:	This PPME1 antibody is un-conjugated
Application:	Western Blotting (WB), Immunohistochemistry (IHC), Immunofluorescence (IF), Flow Cytometry (FACS)

Product Details

Immunogen:	Full length human recombinant protein of human PPME1 (NP_057231) produced in HEK293T cell.
Clone:	10A12
Isotype:	IgG2a
Purification:	Purified from mouse ascites fluids by affinity chromatography

Target Details

Target:	PPME1
Alternative Name:	PPME1 (PPME1 Products)
Molecular Weight:	42.3 kDa

Target Details

Gene ID:	51400
NCBI Accession:	NM_016147
HGNC:	51400
Pathways:	Methionine Biosynthetic Process

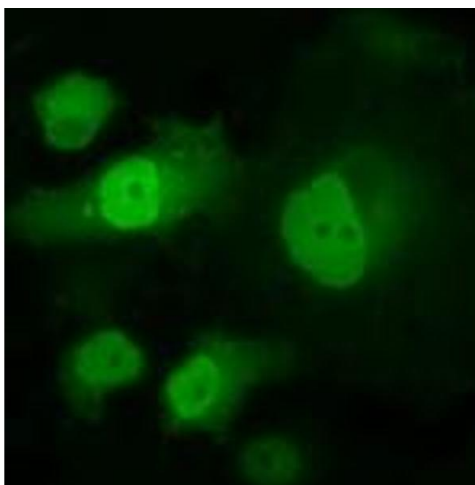
Application Details

Application Notes:	WB 1:2000, IHC 1:50, IF 1:100, Flow 1:100
Comment:	The concentration of the product may vary between different lots.
Restrictions:	For Research Use only

Handling

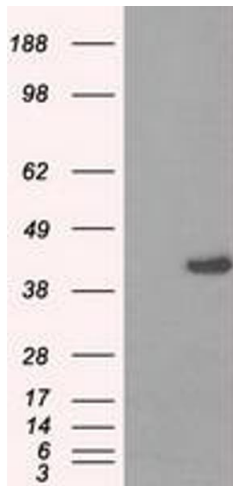
Format:	Liquid
Concentration:	0.5-1.0 mg/mL
Buffer:	PBS (pH 7.3) containing 1 % BSA, 50 % glycerol and 0.02 % sodium azide.
Preservative:	Sodium azide
Precaution of Use:	This product contains sodium azide: a POISONOUS AND HAZARDOUS SUBSTANCE which should be handled by trained staff only.

Images



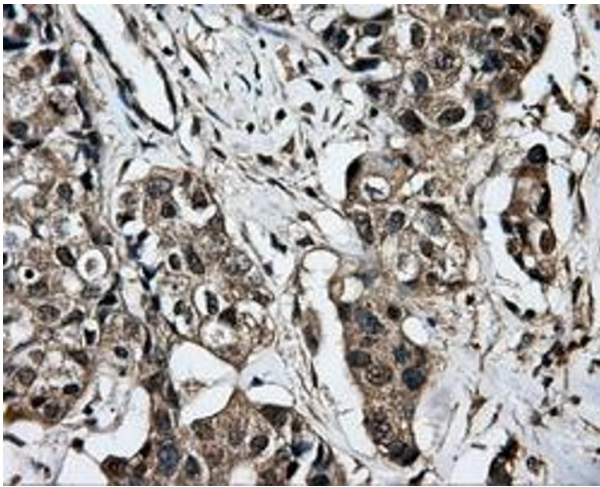
Immunofluorescence

Image 1. Anti-PPME1 mouse monoclonal antibody (ABIN2453492) immunofluorescent staining of COS7 cells transiently transfected by pCMV6-ENTRY PPME1 (RC200009).



Western Blotting

Image 2. HEK293T cells were transfected with the pCMV6-ENTRY control (Left lane) or pCMV6-ENTRY PPME1 (Right lane) cDNA for 48 hrs and lysed. Equivalent amounts of cell lysates (5 μ g per lane) were separated by SDS-PAGE and immunoblotted with anti-PPME1.



Immunohistochemistry

Image 3. Immunohistochemical staining of paraffin-embedded Adenocarcinoma of breast tissue using anti-PPME1 mouse monoclonal antibody. (ABIN2453492, Dilution 1:50)