

Datasheet for ABIN2729464

## PPP1CB Protein (Transcript Variant 3) (Myc-DYKDDDDK Tag)



[Go to Product page](#)

1 Image

1 Publication

### Overview

Quantity:	20 µg
Target:	PPP1CB
Protein Characteristics:	Transcript Variant 3
Origin:	Human
Source:	HEK-293 Cells
Protein Type:	Recombinant
Purification tag / Conjugate:	This PPP1CB protein is labelled with Myc-DYKDDDDK Tag.
Application:	Antibody Production (AbP), Standard (STD)

### Product Details

Characteristics:	<ul style="list-style-type: none"> <li>• Recombinant human PPP1CB (transcript variant 3) protein expressed in HEK293 cells.</li> <li>• Produced with end-sequenced ORF clone</li> </ul>
Purity:	> 80 % as determined by SDS-PAGE and Coomassie blue staining

### Target Details

Target:	PPP1CB
Alternative Name:	Ppp1cb ( <a href="#">PPP1CB Products</a> )
Background:	The protein encoded by this gene is one of the three catalytic subunits of protein phosphatase 1 (PP1). PP1 is a serine/threonine specific protein phosphatase known to be involved in the regulation of a variety of cellular processes, such as cell division, glycogen metabolism, muscle contractility, protein synthesis, and HIV-1 viral transcription. Mouse studies suggest that PP1

## Target Details

	functions as a suppressor of learning and memory. Two alternatively spliced transcript variants encoding distinct isoforms have been observed.
Molecular Weight:	37 kDa
NCBI Accession:	<a href="#">NP_996759</a>
Pathways:	<a href="#">M Phase</a> , <a href="#">Cellular Glucan Metabolic Process</a> , <a href="#">Regulation of Carbohydrate Metabolic Process</a> , <a href="#">Lipid Metabolism</a>

## Application Details

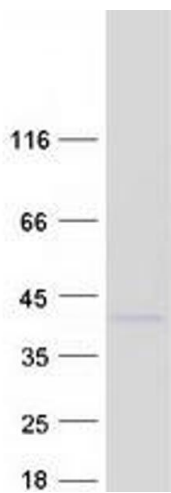
Application Notes:	Recombinant human proteins can be used for: Native antigens for optimized antibody production Positive controls in ELISA and other antibody assays
Comment:	The tag is located at the C-terminal.
Restrictions:	For Research Use only

## Handling

Concentration:	50 µg/mL
Buffer:	25 mM Tris.HCl, pH 7.3, 100 mM glycine, 10 % glycerol.
Storage:	-80 °C
Storage Comment:	Store at -80°C. Thaw on ice, aliquot to individual single-use tubes, and then re-freeze immediately. Only 2-3 freeze thaw cycles are recommended.

## Publications

Product cited in:	Xie, Zhang, Chen, Xie, Chen, Cheng, Zhou, Chen: "Developmental Status: Impact of Short-Term Ischemia on Follicular Survival of Whole Ovarian Transplantation in a Rabbit Model." in: <b>PLoS ONE</b> , Vol. 10, Issue 8, pp. e0135049, (2015) ( <a href="#">PubMed</a> ).
-------------------	---



Western Blotting

**Image 1.** Validation with Western Blot