

Datasheet for ABIN2729482

anti-PPP1R7 antibody[Go to Product page](#)

2 Images

Overview

| | |
|--------------|-----------------------|
| Quantity: | 0.1 mL |
| Target: | PPP1R7 |
| Reactivity: | Human, Dog |
| Host: | Mouse |
| Clonality: | Monoclonal |
| Application: | Western Blotting (WB) |

Product Details

| | |
|---------------|---------------------------------------------------------------------------------------------|
| Immunogen: | Full length human recombinant protein of human PPP1R7 (NP_002703) produced in HEK293T cell. |
| Clone: | 3E7 |
| Isotype: | IgG2a |
| Purification: | Purified from mouse ascites fluids by affinity chromatography |

Target Details

| | |
|-------------------|--------------------------------------------|
| Target: | PPP1R7 |
| Alternative Name: | PPP1R7 (PPP1R7 Products) |
| Molecular Weight: | 41.6 kDa |
| Gene ID: | 5510 |
| NCBI Accession: | NM_002712 |

Target Details

HGNC: 5510

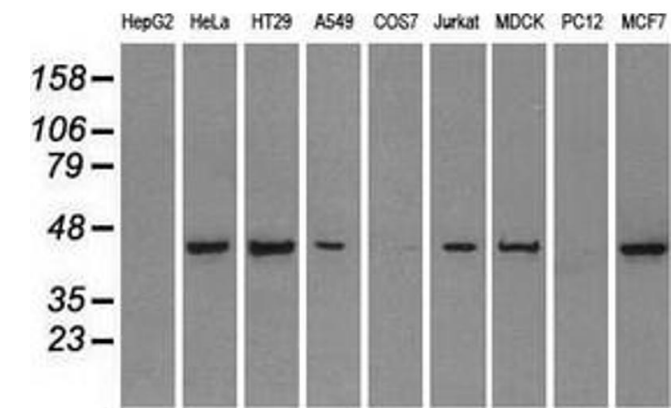
Application Details

| | |
|--------------------|-------------------------------------------------------------------|
| Application Notes: | WB 1:2000, |
| Comment: | The concentration of the product may vary between diferrent lots. |
| Restrictions: | For Research Use only |

Handling

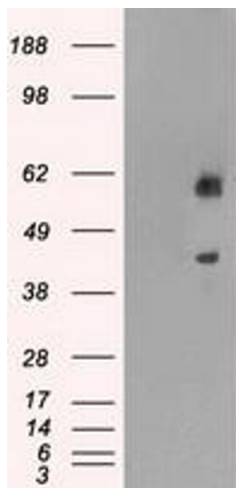
| | |
|--------------------|------------------------------------------------------------------------------------------------------------------------|
| Format: | Liquid |
| Concentration: | 0.5-1.0 mg/mL |
| Buffer: | PBS (pH 7.3) containing 1 % BSA, 50 % glycerol and 0.02 % sodium azide. |
| Preservative: | Sodium azide |
| Precaution of Use: | This product contains sodium azide: a POISONOUS AND HAZARDOUS SUBSTANCE which should be handled by trained staff only. |

Images



Western Blotting

Image 1. Western blot analysis of extracts (35 µg) from 9 different cell lines by using anti-PPP1R7 monoclonal antibody.



Western Blotting

Image 2. HEK293T cells were transfected with the pCMV6-ENTRY control (Left lane) or pCMV6-ENTRY PPP1R7 (Right lane) cDNA for 48 hrs and lysed. Equivalent amounts of cell lysates (5 µg per lane) were separated by SDS-PAGE and immunoblotted with anti-PPP1R7.