

Datasheet for ABIN2729526

anti-PPWD1 antibody

3 Images

[Go to Product page](#)

Overview

Quantity:	0.1 mL
Target:	PPWD1
Reactivity:	Human
Host:	Mouse
Clonality:	Monoclonal
Application:	Western Blotting (WB), Immunofluorescence (IF), Flow Cytometry (FACS), Immunohistochemistry (IHC)

Product Details

Immunogen:	Full length human recombinant protein of human PPWD1 (NP_056157) produced in HEK293T cell.
Clone:	1B8
Isotype:	IgG1
Purification:	Purified from mouse ascites fluids by affinity chromatography

Target Details

Target:	PPWD1
Alternative Name:	PPWD1 (PPWD1 Products)
Molecular Weight:	73.4 kDa
Gene ID:	23398

Target Details

NCBI Accession: [NM_015342](#)

HGNC: 23398

Application Details

Application Notes: WB 1:200~500, IF 1:100, FLOW 1:100, IHC: 1:150

Comment: The concentration of the product may vary between diferrent lots.

Restrictions: For Research Use only

Handling

Format: Liquid

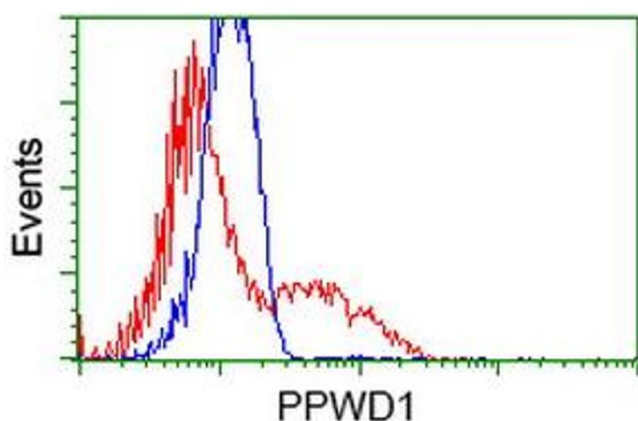
Concentration: 0.5-1.0 mg/mL

Buffer: PBS (PH 7.3) containing 1 % BSA, 50 % glycerol and 0.02 % sodium azide.

Preservative: Sodium azide

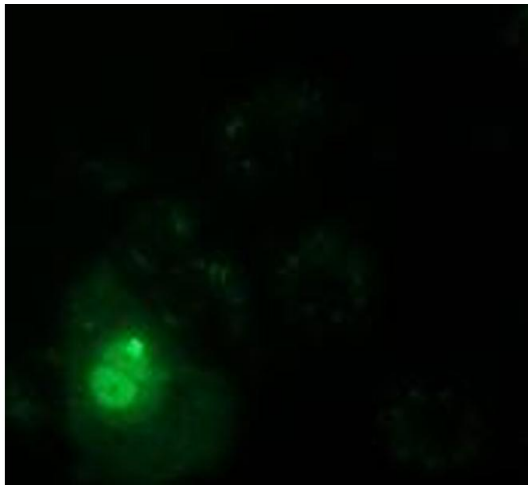
Precaution of Use: This product contains sodium azide: a POISONOUS AND HAZARDOUS SUBSTANCE which should be handled by trained staff only.

Images



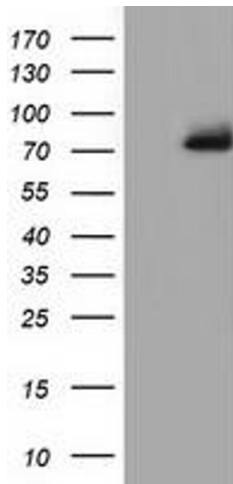
Flow Cytometry

Image 1. HEK293T cells transfected with either RC204570 overexpress plasmid (Red) or empty vector control plasmid (Blue) were immunostained by anti-PPWD1 antibody (ABIN2453498), and then analyzed by flow cytometry.



Immunofluorescence

Image 2. Anti-PPWD1 mouse monoclonal antibody (ABIN2453498) immunofluorescent staining of COS7 cells transiently transfected by pCMV6-ENTRY PPWD1 (RC204570).



Western Blotting

Image 3. HEK293T cells were transfected with the pCMV6-ENTRY control (Left lane) or pCMV6-ENTRY PPWD1 (Right lane) cDNA for 48 hrs and lysed. Equivalent amounts of cell lysates (5 µg per lane) were separated by SDS-PAGE and immunoblotted with anti-PPWD1.