

Datasheet for ABIN2729549

**PRAME Protein (Transcript Variant 4) (Myc-DYKDDDDK Tag)**[Go to Product page](#)**1** Image

## Overview

Quantity:	20 µg
Target:	PRAME
Protein Characteristics:	Transcript Variant 4
Origin:	Human
Source:	HEK-293 Cells
Protein Type:	Recombinant
Purification tag / Conjugate:	This PRAME protein is labelled with Myc-DYKDDDDK Tag.
Application:	Antibody Production (AbP), Standard (STD)

## Product Details

Characteristics:	<ul style="list-style-type: none"><li>• Recombinant human PRAME / MAPE (transcript variant 4) protein expressed in HEK293 cells.</li><li>• Produced with end-sequenced ORF clone</li></ul>
Purity:	> 80 % as determined by SDS-PAGE and Coomassie blue staining

## Target Details

Target:	PRAME
Alternative Name:	Prame,mape ( <a href="#">PRAME Products</a> )
Background:	This gene encodes an antigen that is preferentially expressed in human melanomas and that is recognized by cytolytic T lymphocytes. It is not expressed in normal tissues, except testis. The encoded protein acts as a repressor of retinoic acid receptor, and likely confers a growth

## Target Details

	advantage to cancer cells via this function. Alternative splicing results in multiple transcript variants.
Molecular Weight:	57.7 kDa
NCBI Accession:	<a href="#">NP_996838</a>
Pathways:	<a href="#">Retinoic Acid Receptor Signaling Pathway</a> , <a href="#">Nuclear Hormone Receptor Binding</a>

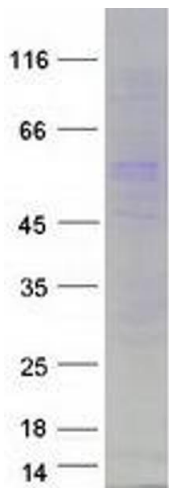
## Application Details

Application Notes:	Recombinant human proteins can be used for: Native antigens for optimized antibody production Positive controls in ELISA and other antibody assays
Comment:	The tag is located at the C-terminal.
Restrictions:	For Research Use only

## Handling

Concentration:	50 µg/mL
Buffer:	25 mM Tris.HCl, pH 7.3, 100 mM glycine, 10 % glycerol.
Storage:	-80 °C
Storage Comment:	Store at -80°C. Thaw on ice, aliquot to individual single-use tubes, and then re-freeze immediately. Only 2-3 freeze thaw cycles are recommended.

## Images



**Western Blotting**

**Image 1.** Validation with Western Blot