

Datasheet for ABIN2729571

PREX2 Protein (Transcript Variant 1) (Myc-DYKDDDDK Tag)[Go to Product page](#)**1** Image

Overview

Quantity:	20 µg
Target:	PREX2 (DEPDC2)
Protein Characteristics:	Transcript Variant 1
Origin:	Human
Source:	HEK-293 Cells
Protein Type:	Recombinant
Purification tag / Conjugate:	This PREX2 protein is labelled with Myc-DYKDDDDK Tag.
Application:	Antibody Production (AbP), Standard (STD)

Product Details

Characteristics:	<ul style="list-style-type: none">• Recombinant human PREX2 / DEPDC2 (transcript variant 1) protein expressed in HEK293 cells.• Produced with end-sequenced ORF clone
Purity:	> 80 % as determined by SDS-PAGE and Coomassie blue staining

Target Details

Target:	PREX2 (DEPDC2)
Alternative Name:	Prex2,depdc2 (DEPDC2 Products)
Background:	The protein encoded by this gene belongs to the phosphatidylinositol 3,4,5-trisphosphate (PIP3)-dependent Rac exchanger (PREX) family, which are Dbl-type guanine-nucleotide exchange factors for Rac family small G proteins. Structural domains of this protein include the

Target Details

catalytic diffuse B-cell lymphoma homology and pleckstrin homology (DHPH) domain, two disheveled, EGL-10, and pleckstrin homology (DEP) domains, two PDZ domains, and a C-terminal inositol polyphosphate-4 phosphatase (IP4P) domain that is found in one of the isoforms. This protein facilitates the exchange of GDP for GTP on Rac1, allowing the GTP-bound Rac1 to activate downstream effectors. Studies also show that the pleckstrin homology domain of this protein interacts with the phosphatase and tensin homolog (PTEN) gene product to inhibit PTEN phosphatase activity, thus activating the phosphoinositide-3 kinase (PI3K) signaling pathway. Conversely, the PTEN gene product has also been shown to inhibit the GEF activity of this protein. This gene plays a role in insulin-signaling pathways, and either mutations or overexpression of this gene have been observed in some cancers.

Molecular Weight: 182.4 kDa

NCBI Accession: [NP_079146](#)

Application Details

Application Notes: Recombinant human proteins can be used for:
Native antigens for optimized antibody production
Positive controls in ELISA and other antibody assays

Comment: The tag is located at the C-terminal.

Restrictions: For Research Use only

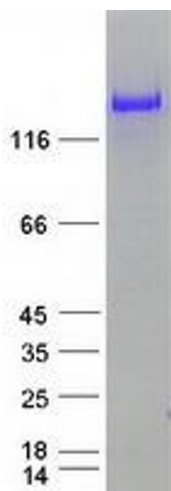
Handling

Concentration: 50 µg/mL

Buffer: 25 mM Tris.HCl, pH 7.3, 100 mM glycine, 10 % glycerol.

Storage: -80 °C

Storage Comment: Store at -80°C. Thaw on ice, aliquot to individual single-use tubes, and then re-freeze immediately. Only 2-3 freeze thaw cycles are recommended.



Western Blotting

Image 1. Validation with Western Blot