

Datasheet for ABIN2729600  
**anti-PRKAR2A antibody**



[Go to Product page](#)

3 Images

### Overview

|              |   |
|--------------|---|
| Quantity:    | 0.1 mL  |
| Target:      | PRKAR2A   |
| Reactivity:  | Human, Rat, Monkey, Dog   |
| Host:        | Mouse   |
| Clonality:   | Monoclonal  |
| Conjugate:   | This PRKAR2A antibody is un-conjugated  |
| Application: | Western Blotting (WB), Immunofluorescence (IF), Immunohistochemistry (IHC), Flow Cytometry (FACS) |

### Product Details

|               |  |
|---------------|--|
| Immunogen:    | Full length human recombinant protein of human PRKAR2A (NP_004148) produced in HEK293T cell. |
| Clone:        | 5F1  |
| Isotype:      | IgG1   |
| Purification: | Purified from mouse ascites fluids by affinity chromatography                                |

### Target Details

|                   |  |
|-------------------|--|
| Target:           | PRKAR2A                                      |
| Alternative Name: | PRKAR2A ( <a href="#">PRKAR2A Products</a> ) |
| Molecular Weight: | 45.3 kDa                                     |

## Target Details

---

Gene ID: 5576

NCBI Accession: [NM\\_004157](#)

HGNC: 5576

Pathways: [Hedgehog Signaling](#), [EGFR Signaling Pathway](#), [Neurotrophin Signaling Pathway](#), [Myometrial Relaxation and Contraction](#), [G-protein mediated Events](#), [Interaction of EGFR with phospholipase C-gamma](#), [SARS-CoV-2 Protein Interactome](#), [The Global Phosphorylation Landscape of SARS-CoV-2 Infection](#)

## Application Details

---

Application Notes: WB 1:1000~2000, IHC 1:50, IF 1:100, FLOW 1:100

Comment: The concentration of the product may vary between different lots.

Restrictions: For Research Use only

## Handling

---

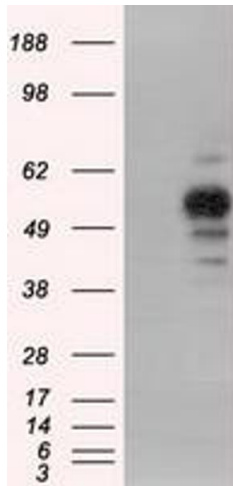
Format: Liquid

Concentration: 0.5-1.0 mg/mL

Buffer: PBS (pH 7.3) containing 1 % BSA, 50 % glycerol and 0.02 % sodium azide.

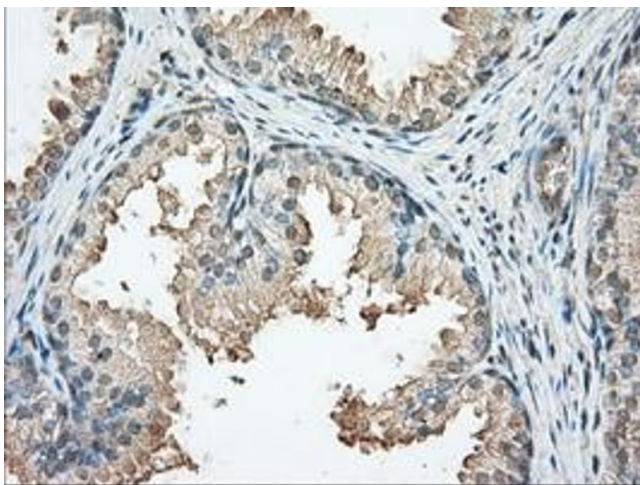
Preservative: Sodium azide

Precaution of Use: This product contains sodium azide: a POISONOUS AND HAZARDOUS SUBSTANCE which should be handled by trained staff only.



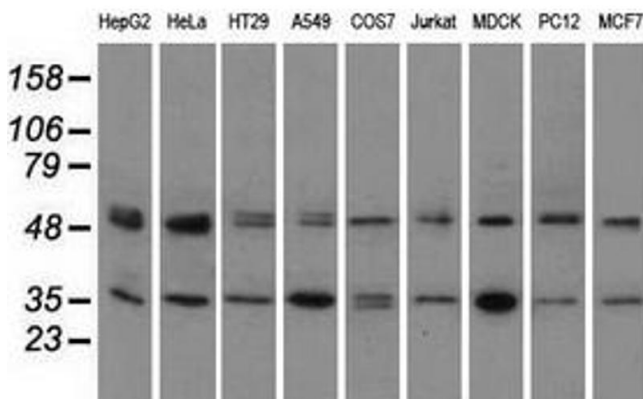
### Western Blotting

**Image 1.** HEK293T cells were transfected with the pCMV6-ENTRY control (Left lane) or pCMV6-ENTRY PRKAR2A (Right lane) cDNA for 48 hrs and lysed. Equivalent amounts of cell lysates (5 µg per lane) were separated by SDS-PAGE and immunoblotted with anti-PRKAR2A.



### Immunohistochemistry

**Image 2.** Immunohistochemical staining of paraffin-embedded Human prostate tissue using anti-PRKAR2A mouse monoclonal antibody. (ABIN2453508, Dilution 1:50)



### Western Blotting

**Image 3.** Western blot analysis of extracts (35 µg) from 9 different cell lines by using anti-PRKAR2A monoclonal antibody.