

Datasheet for ABIN2729601

**PRKAR2A Protein (Myc-DYKDDDDK Tag)**[Go to Product page](#)**1** Image

## Overview

Quantity:	20 µg
Target:	PRKAR2A
Origin:	Human
Source:	HEK-293 Cells
Protein Type:	Recombinant
Purification tag / Conjugate:	This PRKAR2A protein is labelled with Myc-DYKDDDDK Tag.
Application:	Antibody Production (AbP), Standard (STD)

## Product Details

Characteristics:	<ul style="list-style-type: none"><li>• Recombinant human PRKAR2A protein expressed in HEK293 cells.</li><li>• Produced with end-sequenced ORF clone</li></ul>
Purity:	> 80 % as determined by SDS-PAGE and Coomassie blue staining

## Target Details

Target:	PRKAR2A
Alternative Name:	Prkar2a ( <a href="#">PRKAR2A Products</a> )
Background:	Regulatory subunit of the cAMP-dependent protein kinases involved in cAMP signaling in cells. Type II regulatory chains mediate membrane association by binding to anchoring proteins, including the MAP2 kinase. [UniProtKB/Swiss-Prot Function]
Molecular Weight:	45.3 kDa

## Target Details

NCBI Accession:	<a href="#">NP_004148</a>
Pathways:	<a href="#">Hedgehog Signaling</a> , <a href="#">EGFR Signaling Pathway</a> , <a href="#">Neurotrophin Signaling Pathway</a> , <a href="#">Myometrial Relaxation and Contraction</a> , <a href="#">G-protein mediated Events</a> , <a href="#">Interaction of EGFR with phospholipase C-gamma</a> , <a href="#">SARS-CoV-2 Protein Interactome</a> , <a href="#">The Global Phosphorylation Landscape of SARS-CoV-2 Infection</a>

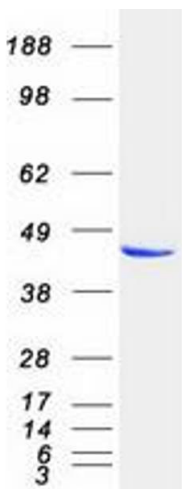
## Application Details

Application Notes:	Recombinant human proteins can be used for: Native antigens for optimized antibody production Positive controls in ELISA and other antibody assays
Comment:	The tag is located at the C-terminal.
Restrictions:	For Research Use only

## Handling

Concentration:	50 µg/mL
Buffer:	25 mM Tris.HCl, pH 7.3, 100 mM glycine, 10 % glycerol.
Storage:	-80 °C
Storage Comment:	Store at -80°C. Thaw on ice, aliquot to individual single-use tubes, and then re-freeze immediately. Only 2-3 freeze thaw cycles are recommended.

## Images



### Western Blotting

**Image 1.** Validation with Western Blot