

Datasheet for ABIN2729686

## anti-PFN1 antibody

### 3 Images



[Go to Product page](#)

### Overview

Quantity:	0.1 mL
Target:	PFN1
Reactivity:	Human, Rat, Monkey, Dog
Host:	Mouse
Clonality:	Monoclonal
Conjugate:	This PFN1 antibody is un-conjugated
Application:	Western Blotting (WB), Immunohistochemistry (IHC), Flow Cytometry (FACS), Immunofluorescence (IF)

### Product Details

Immunogen:	Full length human recombinant protein of human PFN1 (NP_005013) produced in HEK293T cell.
Clone:	1D5
Isotype:	IgG2a
Purification:	Purified from mouse ascites fluids by affinity chromatography

### Target Details

Target:	PFN1
Alternative Name:	PFN1 ( <a href="#">PFN1 Products</a> )
Molecular Weight:	14.9 kDa

## Target Details

Gene ID:	5216
NCBI Accession:	<a href="#">NM_005022</a>
HGNC:	5216
Pathways:	<a href="#">Regulation of Actin Filament Polymerization, Tube Formation, Maintenance of Protein Location</a>

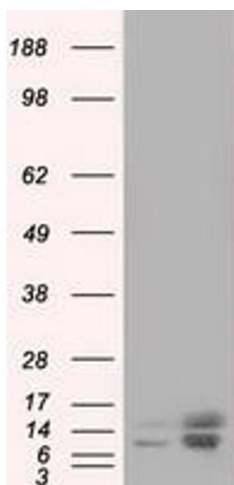
## Application Details

Application Notes:	WB 1:1000~2000, IHC 1:50, IF 1:100, FLOW 1:100
Comment:	The concentration of the product may vary between diferrent lots.
Restrictions:	For Research Use only

## Handling

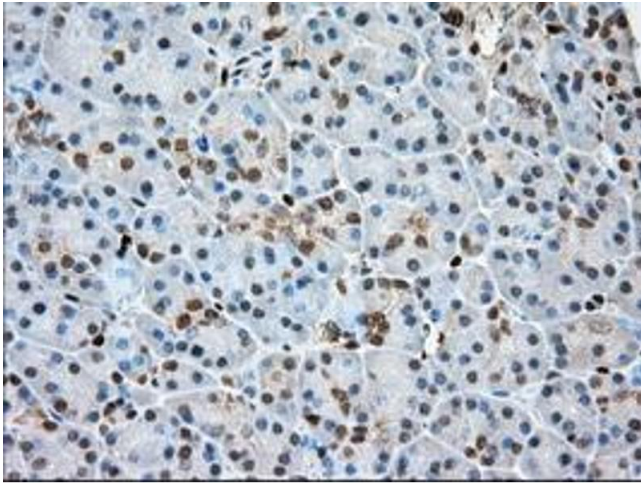
Format:	Liquid
Concentration:	0.5-1.0 mg/mL
Buffer:	PBS ( pH 7.3) containing 1 % BSA, 50 % glycerol and 0.02 % sodium azide.
Preservative:	Sodium azide
Precaution of Use:	This product contains sodium azide: a POISONOUS AND HAZARDOUS SUBSTANCE which should be handled by trained staff only.

## Images



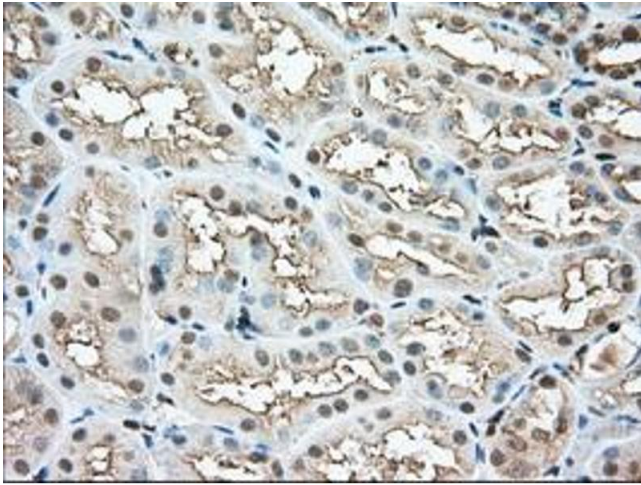
### Western Blotting

**Image 1.** HEK293T cells were transfected with the pCMV6-ENTRY control (Left lane) or pCMV6-ENTRY PFN1 (Right lane) cDNA for 48 hrs and lysed. Equivalent amounts of cell lysates (5 µg per lane) were separated by SDS-PAGE and immunoblotted with anti-PFN1.



#### Immunohistochemistry

**Image 2.** Immunohistochemical staining of paraffin-embedded Human Kidney tissue using anti-PFN1 mouse monoclonal antibody. (ABIN2453453, Dilution 1:50)



#### Immunohistochemistry

**Image 3.** Immunohistochemical staining of paraffin-embedded Human pancreas tissue using anti-PFN1 mouse monoclonal antibody. (ABIN2453453, Dilution 1:50)