

Datasheet for ABIN2729753
anti-Prominin 2 antibody[Go to Product page](#)

2 Images

Overview

Quantity:	0.1 mL
Target:	Prominin 2 (PROM2)
Reactivity:	Human
Host:	Mouse
Clonality:	Monoclonal
Conjugate:	This Prominin 2 antibody is un-conjugated
Application:	Western Blotting (WB), Immunoprecipitation (IP)

Product Details

Immunogen:	Full-length protein expressed in 293T cell transfected with human PROM2 expression vector
Clone:	5E5
Isotype:	IgG2b
Purification:	Purified from mouse ascites fluids by affinity chromatography

Target Details

Target:	Prominin 2 (PROM2)
Alternative Name:	PROM2 (PROM2 Products)
Molecular Weight:	91.8 kDa
Gene ID:	150696
NCBI Accession:	NM_144707

Target Details

HGNC: 150696

Application Details

Application Notes: WB 1:2000, IP: 4 µg/mL

Comment: The concentration of the product may vary between different lots.

Restrictions: For Research Use only

Handling

Format: Liquid

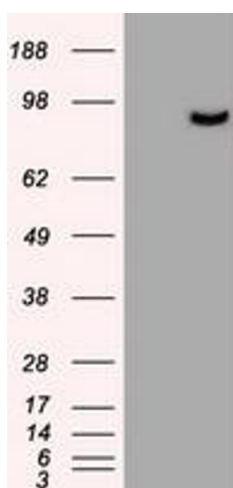
Concentration: 0.5-1.0 mg/mL

Buffer: PBS (pH 7.3) containing 1 % BSA, 50 % glycerol and 0.02 % sodium azide.

Preservative: Sodium azide

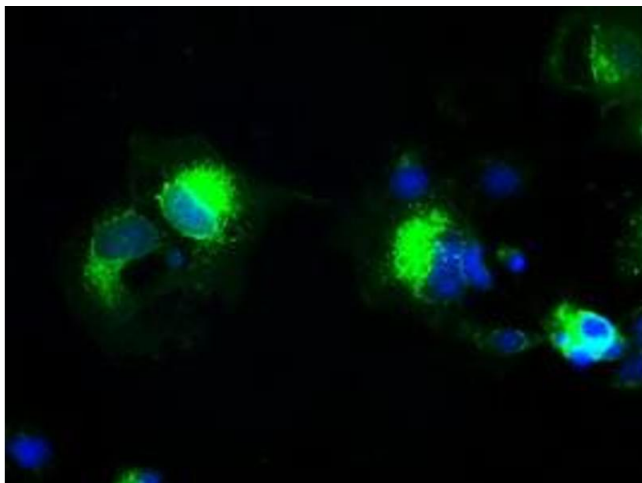
Precaution of Use: This product contains sodium azide: a POISONOUS AND HAZARDOUS SUBSTANCE which should be handled by trained staff only.

Images



Western Blotting

Image 1. HEK293T cells were transfected with the pCMV6-ENTRY control (Left lane) or pCMV6-ENTRY PROM2 (Right lane) cDNA for 48 hrs and lysed. Equivalent amounts of cell lysates (5 µg per lane) were separated by SDS-PAGE and immunoblotted with anti-PROM2.



Immunofluorescence

Image 2. Anti-PROM2 mouse monoclonal antibody (ABIN2452262) immunofluorescent staining of COS7 cells transiently transfected by pCMV6-ENTRY PROM2 (RC211605).