



[Go to Product page](#)

Datasheet for ABIN2729783

CUTA Protein (Transcript Variant 1) (His tag)

1 Image

Overview

Quantity:	10 µg
Target:	CUTA
Protein Characteristics:	Transcript Variant 1
Origin:	Human
Source:	Escherichia coli (E. coli)
Protein Type:	Recombinant
Purification tag / Conjugate:	This CUTA protein is labelled with His tag.
Application:	Antibody Production (AbP), Standard (STD)

Product Details

Characteristics:	<ul style="list-style-type: none">• Recombinant human Protein CutA (transcript variant 1) protein expressed in E. coli.• Produced with end-sequenced ORF clone
Purity:	> 95 % as determined by SDS-PAGE and Coomassie blue staining
Endotoxin Level:	< 0.1 EU per µg protein as determined by LAL test

Target Details

Target:	CUTA
Alternative Name:	Protein Cuta (CUTA Products)
Background:	May form part of a complex of membrane proteins attached to acetylcholinesterase (AChE). [UniProtKB/Swiss-Prot Function]

Target Details

Molecular Weight: 17.9 kDa

NCBI Accession: [NP_001014433](#)

Application Details

Application Notes: Recombinant human proteins can be used for:
Native antigens for optimized antibody production
Positive controls in ELISA and other antibody assays

Comment: The tag is located at the C-terminal.

Restrictions: For Research Use only

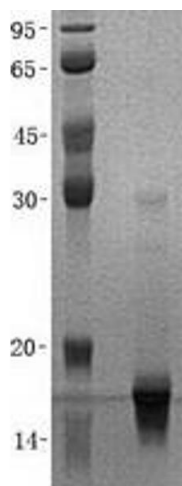
Handling

Buffer: Lyophilized from a 0.2 μ M filtered solution of 20 mM Tris-HCl, 1 mM DTT, pH 8.0. Stable for at least 3 months from receipt of products under proper storage and handling conditions.

Storage: -80 °C

Storage Comment: Store at -80°C. Thaw on ice, aliquot to individual single-use tubes, and then re-freeze immediately. Only 2-3 freeze thaw cycles are recommended.

Images



Western Blotting

Image 1. Validation with Western Blot