



[Go to Product page](#)

Datasheet for ABIN2729813

PPM1H Protein (Myc-DYKDDDDK Tag)

1 Image

1 Publication

Overview

Quantity:	20 µg
Target:	PPM1H
Origin:	Human
Source:	HEK-293 Cells
Protein Type:	Recombinant
Purification tag / Conjugate:	This PPM1H protein is labelled with Myc-DYKDDDDK Tag.
Application:	Antibody Production (AbP), Standard (STD)

Product Details

Characteristics:	<ul style="list-style-type: none">• Recombinant human Protein phosphatase 1H / PPM1H protein expressed in HEK293 cells.• Produced with end-sequenced ORF clone
Purity:	> 80 % as determined by SDS-PAGE and Coomassie blue staining

Target Details

Target:	PPM1H
Alternative Name:	Protein Phosphatase 1h,ppm1h (PPM1H Products)
Molecular Weight:	56.3 kDa
NCBI Accession:	NP_065751

Application Details

Application Notes: Recombinant human proteins can be used for:
Native antigens for optimized antibody production
Positive controls in ELISA and other antibody assays

Comment: The tag is located at the C-terminal.

Restrictions: For Research Use only

Handling

Concentration: 50 µg/mL

Buffer: 25 mM Tris.HCl, pH 7.3, 100 mM glycine, 10 % glycerol.

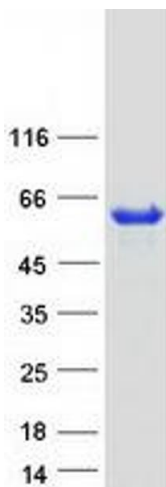
Storage: -80 °C

Storage Comment: Store at -80°C. Thaw on ice, aliquot to individual single-use tubes, and then re-freeze immediately. Only 2-3 freeze thaw cycles are recommended.

Publications

Product cited in: Richter, Dayaram, Gilmartin, Ganji, Pemmasani, Van Der Key, Shohet, Donehower, Kumar: "WIP1 phosphatase as a potential therapeutic target in neuroblastoma." in: **PLoS ONE**, Vol. 10, Issue 2, pp. e0115635, (2015) ([PubMed](#)).

Images



Western Blotting

Image 1. Validation with Western Blot